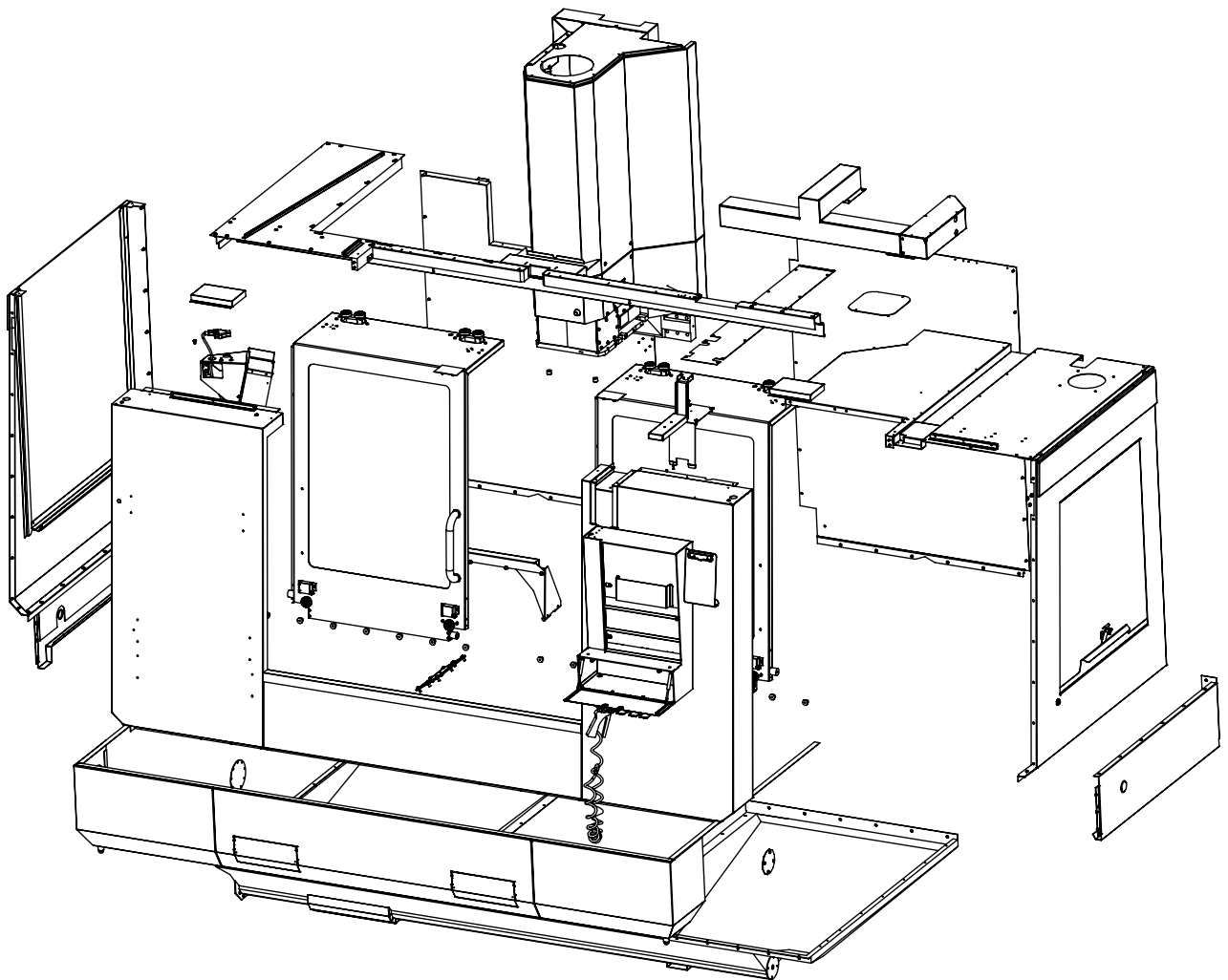
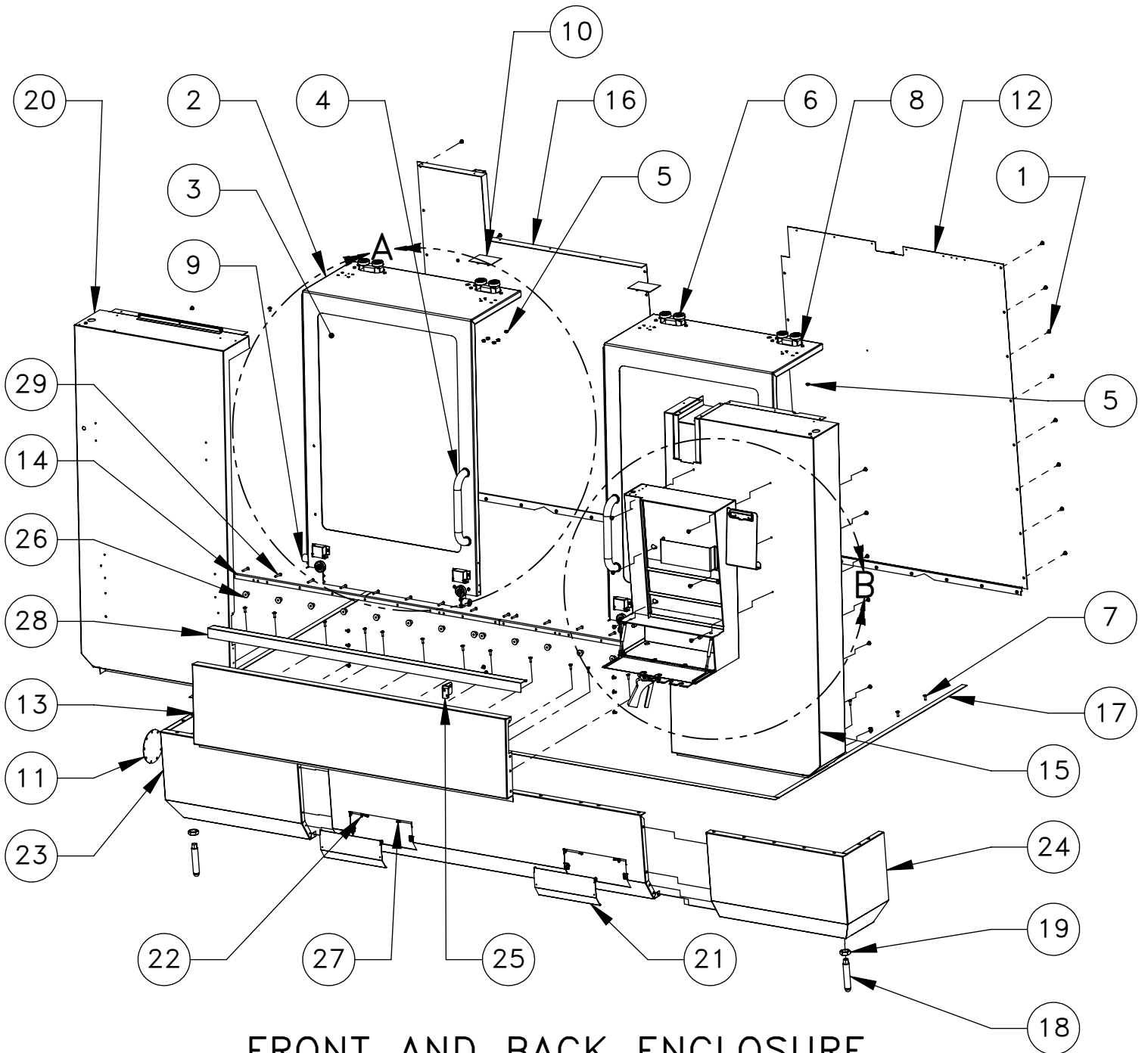


COLLAPSED VIEW



EXPLODED VIEW



FRONT AND BACK ENCLOSURE

ITEM NO.	DESCRIPTION	QTY.
1	FBHCS 1/4-20 X 1/2 SLF-TP W/LOCTITE PATCH	72
2	DOOR FRONT VF-3 VF-4	2
3	WINDOW VF-3 4 FRONT DOOR	2
4	HANDLE DOOR CHROME	2
5	NUT 1/4-20 FLANGE W/NYLON PATCH Z	20
6	BHCS 1/4-20 X 1.25 BLACK OXIDE	12
7	FBHCS 1/4-20 X 3/4 W/LOCTITE PTCH	27
8	MTG FRNT TOP DOOR ROLLERS	4
9	BUMPER DOOR	2
10	AUTODOOR HOLE COVER	2
11	DISCHARGE COVER VF-6 50/BX	1
12	PANEL BACK RIGHT VF-3/4	1
13	PANEL FRONT CENTER MED VERT	1
14	VF-5 V RAIL FRONT	2
15	PANEL FRONT RIGHT VF-3/4	1
16	PANEL BACK LEFT VF-3/4	1
17	VHB TAPE W/FILM LINER 1IN X 36 YD	3
18	SSS 1-14 X 5 ROUND PT	2
19	NUT 1-14 JAM	2
20	PANEL FRONT LEFT VF-3/4	1
21	COVER ACCESS FRNT APRON VMC	2
22	WASHER FLAT NYLON .26 ID X .687 OD	4
23	APRON FRONT LEFT VF-3/4	1
24	APRON FRONT RIGHT VF-3/4	1
25	BRACE MIDDLE FRNT TO BASE VF-3/4/5 80/BX	1
26	RAIL SPACER	20
27	BHCS 10-32 X 1/2	4
28	EDGE PROTECTOR CTR PANEL VF-5	1
29	BHCS 1/4-20 X 1 1/2	20
30	FERRULE DOOR HANDLE	4
31	3/4" X 3/16" VINYL FOAM TAPE	4
32	HANDLE DOOR CHROME	4

SHEET 2 OF 8

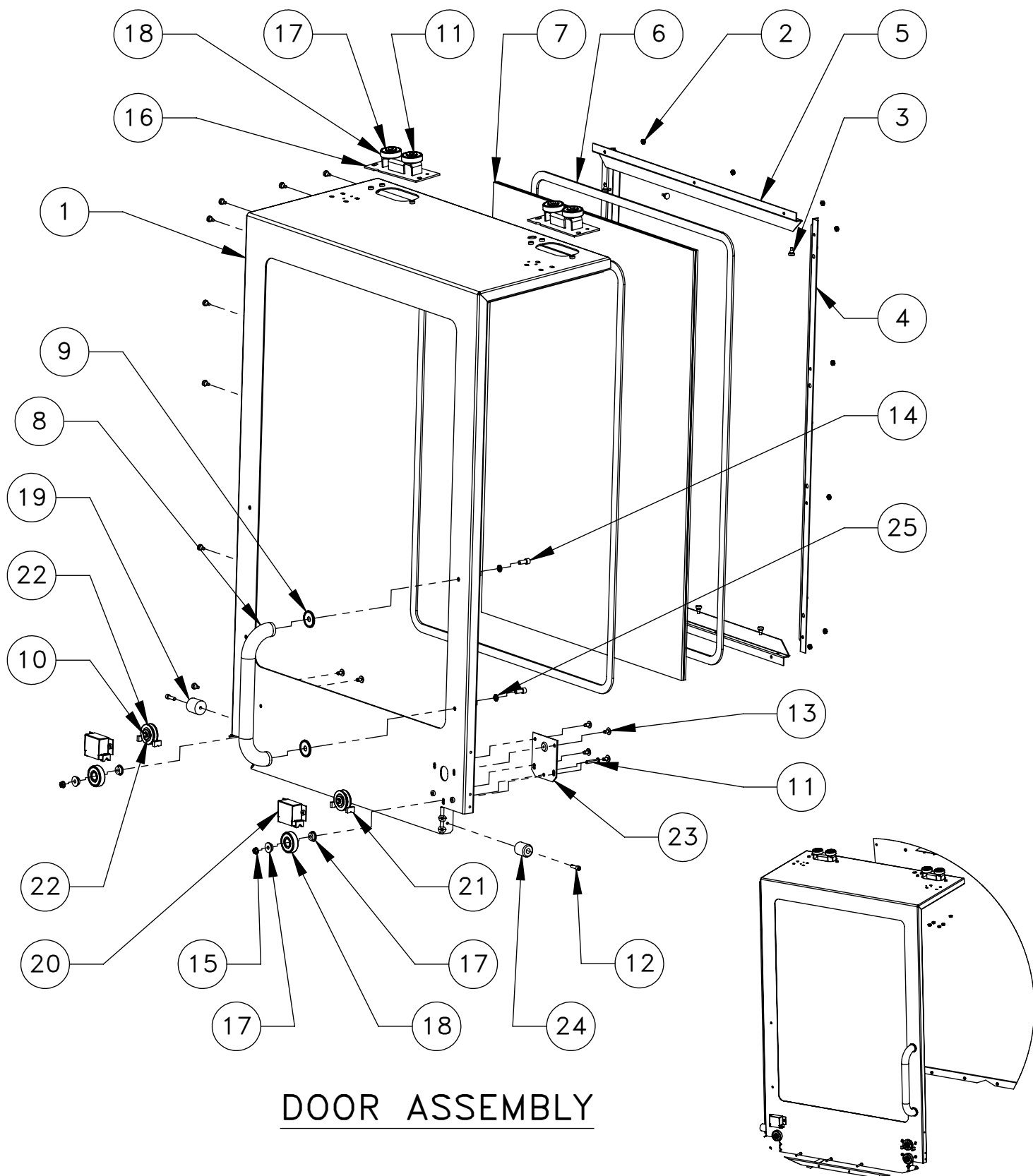
DESCRIPTION

EFFECTIVE DATE

VF-1 - VF-5 ENCLOSURE ASSEMBLY

MAY-2010

SAP DOC NO./VER: /



DOOR ASSEMBLY

**DETAIL A
SCALE 1 : 24**

ITEM NO.	DESCRIPTION	QTY.
1	DOOR FRONT VF-3 VF-4	1
2	NUT 10-32 HEX W/LCKWASHER	14
3	BUMPER, NITRILE .50 DIA. X .25	20
4	RETAINER FRONT WINDOW VF-3 4 VERT	2
5	RETAINER FRONT WINDOW VF-SML HORZ	2
6	3/4" X 3/16" VINYL FOAM TAPE	2
7	WINDOW VF-3 4 FRONT DOOR	1
8	HANDLE DOOR CHROME	1
9	FERRULE DOOR HANDLE	2
10	HHB 1/4-20 X 1 1/4 GRADE 8 PLATED	2
11	BHCS 1/4-20 X 1.25 BLACK OXIDE	6
12	SHCS 1/4-20 X 7/8 W/LOCTITE	2
13	FBHCS 1/4-20 X 1/2 SLF-TP W/LOCTITE PATCH	6
14	SHCS 5/16-18 X 3/4 DOMESTIC ONLY	2
15	NUT 1/4-20 FLANGE W/NYLON PATCH Z	2
16	MTG FRNT TOP DOOR ROLLERS	2
17	TOP DOOR SPACER	12
18	R BRG RAD BALL M17-47-14 DEEP GRV SEALED	6
19	BUMPER DOOR	1
20	WHEEL CVR LOWER FRNT DOOR VF	2
21	FELT WIPER FRONT DOORS	4
22	BEARING #3 V SINGLE ROW SEALED	2
23	DOOR LEVEL ADJUSTER	1
24	BUMPER DOOR 90-95A	1
25	WASHER 5/16 SPLT LOCK PLT	2

SHEET 3 OF 8

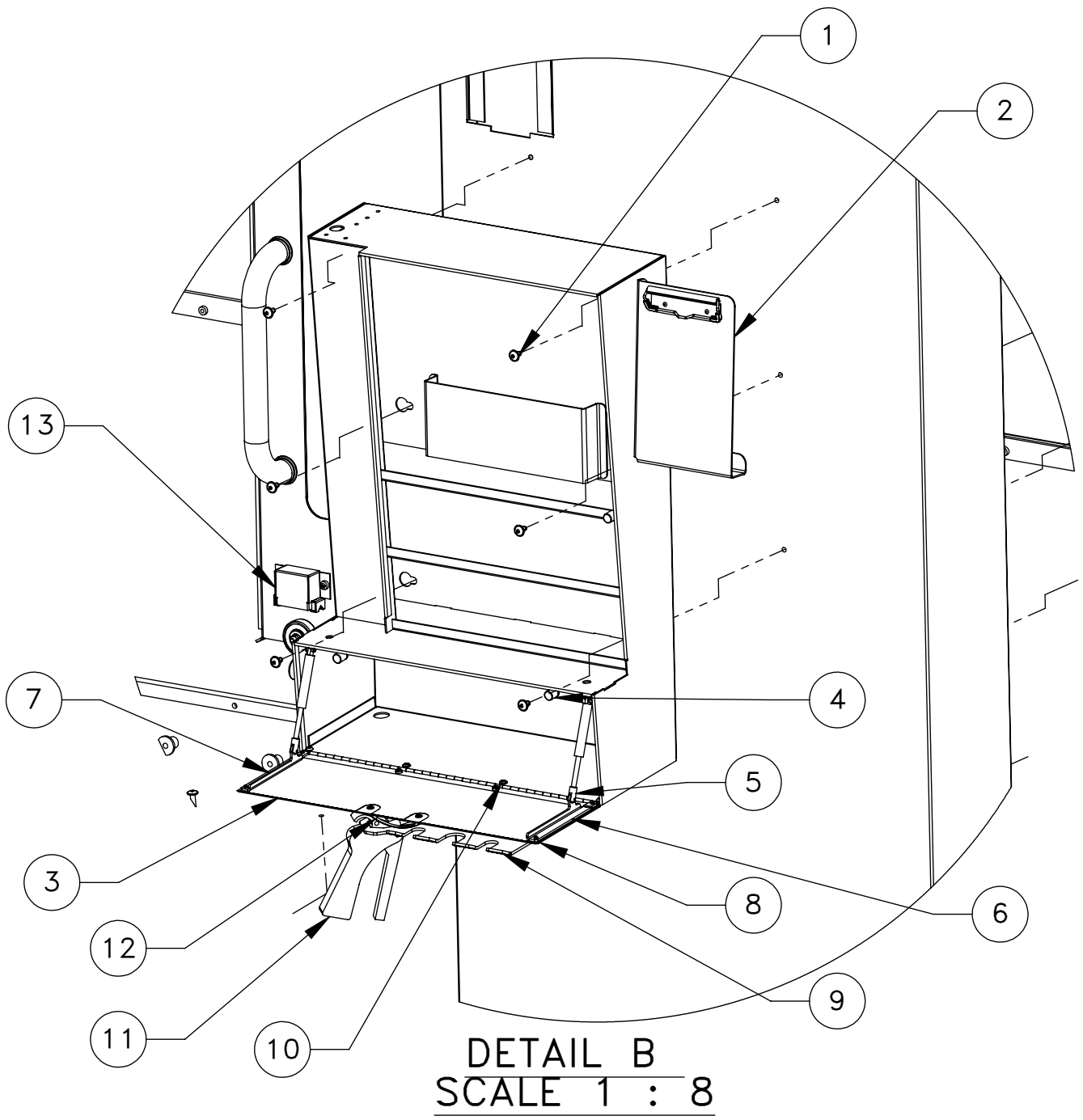
DESCRIPTION

EFFECTIVE DATE

VF-1 - VF-5 ENCLOSURE ASSEMBLY

MAY-2010

SAP DOC NO./VER: /



STORAGE CABINET VIEW

ITEM NO.	DESCRIPTION	QTY.
1	FBHCS 1/4-20 X 1/2 SLF-TP W/LOCTITE PATCH	72
2	WRITING TABLET LIGHT GRAY	1
3	DOOR GLOVE BOX FILM	1
4	BUTTON BUMPER 1/2 X 9/16 ACCURATE 4079-1	3
5	CLEVIS GLOVE BOX	2
6	BRKT RIGHT SHOCK MT STORG CBNT VP-5	1
7	BRKT LEFT SHOCK MT STORG CBNT VP-5	1
8	DOOR GLOVE BOX STORG CBNT	1
9	BRKT SST TOOL HOLDER	1
10	BHCS 10-32 X 3/8 TORX SST	2
11	BLOWGUN PISTOL GRIP 1/4NPT INLET 6	1
12	HANDLE GLOVE BOX	1
13	WHEEL CVR LOWER FRNT DOOR VF	4

SHEET 4 OF 8

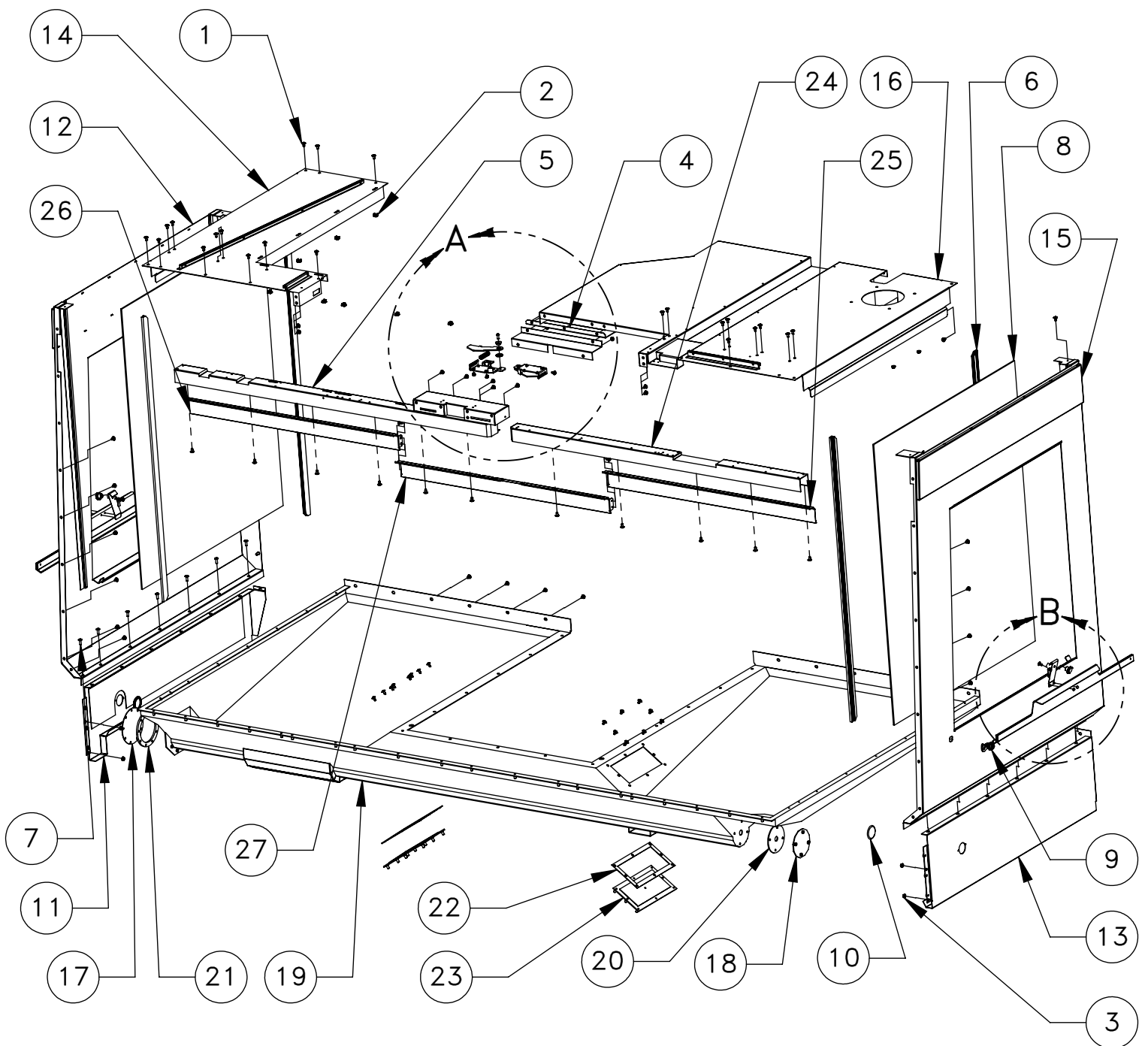
DESCRIPTION

EFFECTIVE DATE

VF-1 - VF-5 ENCLOSURE ASSEMBLY

MAY-2010

SAP DOC NO./VER: /



SIDE, TOP AND BOTTOM
ENCLOSURE

ITEM NO.	DESCRIPTION	QTY.
1	FBHCS 1/4-20 X 1/2 SLF-TP W/LOCTITE PATCH	97
2	1/4-20 CAGE NUT FOR .093-.126 PANEL	9
3	NUT 1/4-20 FLANGE W/NYLON PATCH Z	10
4	CHIP SHIELD HEADER CENTER VF-3/4	1
5	HEADER LEFT VF-3/4	1
6	WINDOW EXTRUSION SIDE VF-3/4	4
7	FBHCS 1/4-20 X 3/4 W/LOCTITE PTCH	13
8	VF-5 SIDE WINDOW	2
9	VF SIDE WINDOW KEYED LATCH	2
10	PLUG HOLE 1.75" BLACK	2
11	APRON SIDE LEFT VF-3/4	1
12	PANEL SIDE LEFT VF-MEDIUM	1
13	APRON SIDE RIGHT VF-3/4	1
14	ROOF TOP LEFT VF-3 VF-4	1
15	PANEL SIDE RIGHT VF-MEDIUM	1
16	ROOF TOP RIGHT VF-3 VF-4	1
17	DISCHARGE COVER VF-6 50/BX	1
18	MOTOR PLATE CONVEYOR MTR	1
19	VF-3/4 PAN ENCLOSURE	1
20	GASKET CONVEYOR MTR	1
21	GASKET DISCHARGE VF-6	1
22	57-0517 LIFTING ACCESS PNL GASKET VMC-M	2
23	25-10307 LIFTING ACCESS PANEL VMC-M	2
24	HEADER RIGHT VF-3/4	1
25	CHIP SHIELD DOOR RIGHT VF-3 VF-4	1
26	CHIP SHIELD DOOR LEFT VF-3 VF-4	1
27	CHIP SHIELD DOOR MID VF-3 VF-4	1

SHEET 5 OF 8

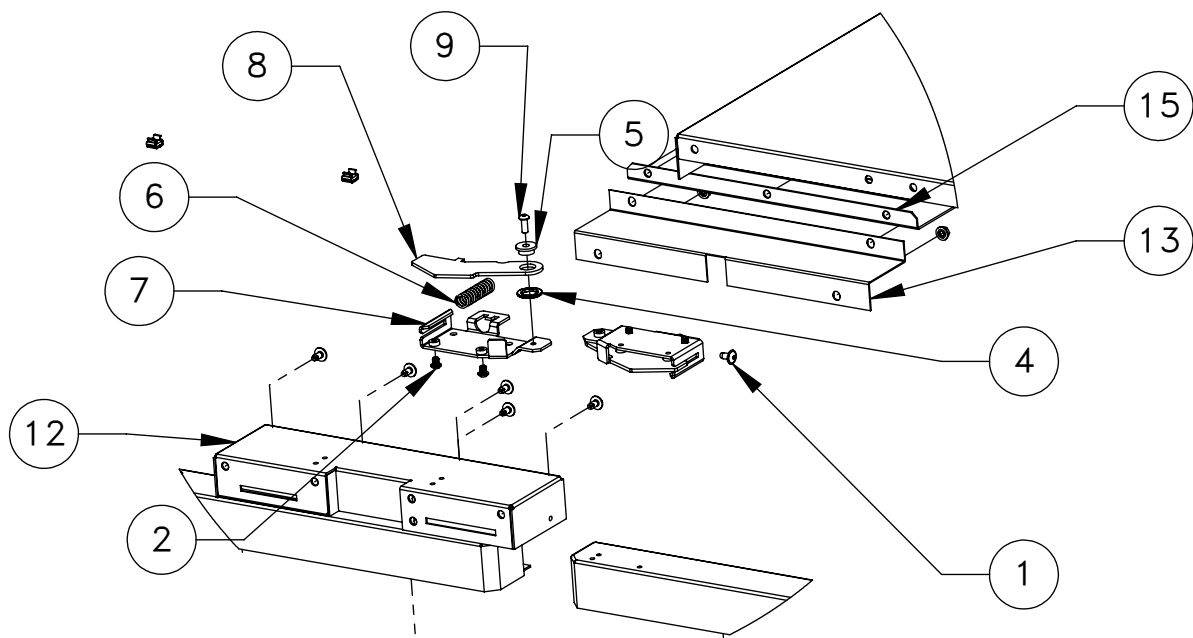
DESCRIPTION

EFFECTIVE DATE

VF-1 - VF-5 ENCLOSURE ASSEMBLY

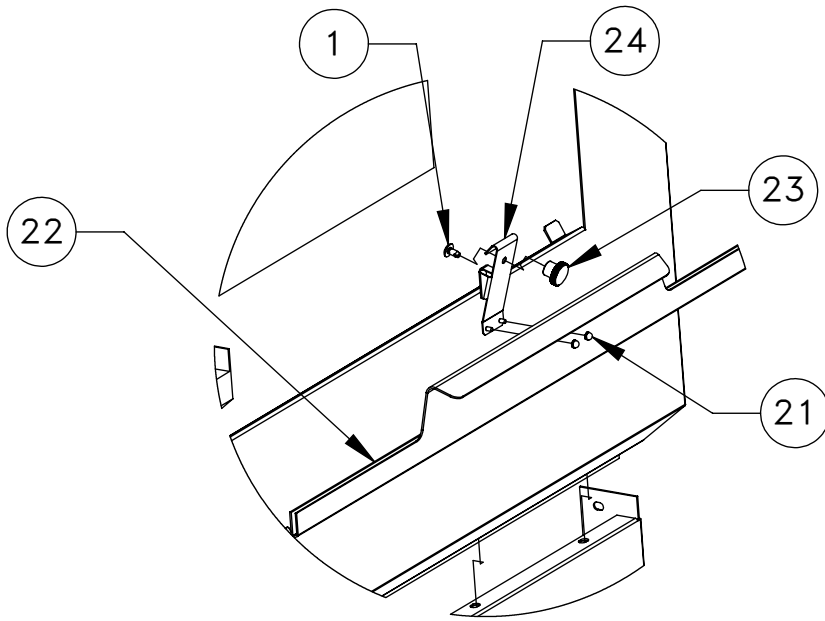
MAY-2010

SAP DOC NO./VER: /



DETAIL A
SCALE 1 : 8

DOOR STOP ASSEMBLY



DETAIL B
SCALE 1 : 8

SIDE WINDOW HANDLE ASSEMBLY

ITEM NO.	DESCRIPTION	QTY.
1	FBHCS 1/4-20 X 1/2 SLF-TP W/LOCTITE PATCH	97
2	BHCS 1/4-20 X 5/16	4
4	SPRING WAVE SSB-0102	4
5	TOP DOOR SPACER	2
6	SPRING EXTRACTOR VERTICAL40 TAPER VF TOO	2
7	MTG BRKT SPRING LOADED DOOR STOP	2
8	LEVER ARM SPRING LOADED DOOR STOP	2
9	BHCS 1/4-20 X 5/8 W/LOCTITE	2
12	HEADER CENTER VF-3/4	1
13	COVER ENCL DOOR DETENT VF-3 4	1
15	CHIP SHIELD HEADER CENTER VF-3/4	1
21	NUT ACORN 8-32 SLF LCKNG HX BRIGHT FINIS	4
22	HANDLE SIDE WINDOW VF-MEDIUM	2
23	MACHINE KNOB	2
24	SPRING CATCH SIDE PANEL	2

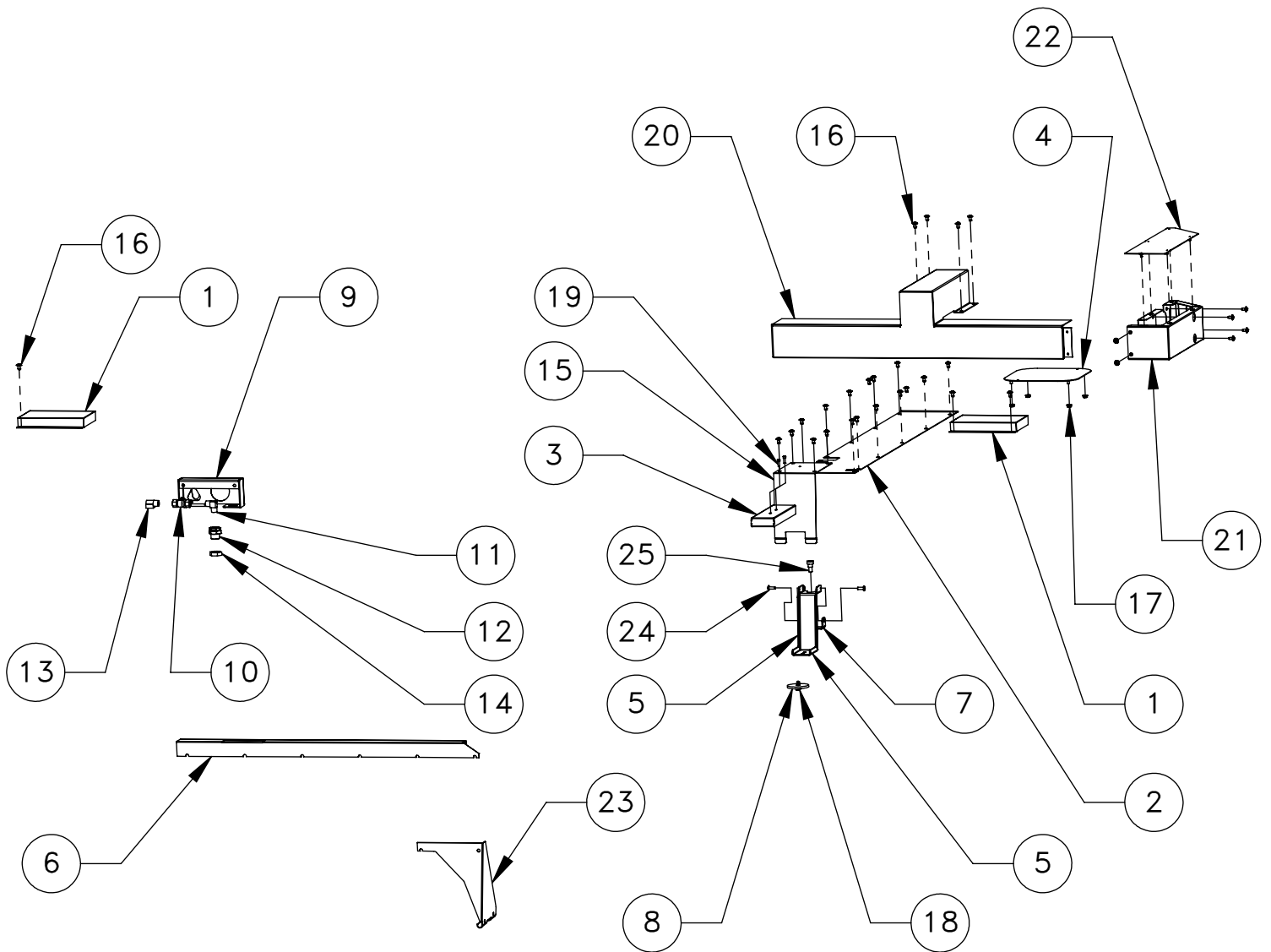
DESCRIPTION

EFFECTIVE DATE

VF-1 - VF-5 ENCLOSURE ASSEMBLY

MAY-2010

SAP DOC NO./VER: /



CABLE COVER ENCLOSURE ASSEMBLY

ITEM NO.	DESCRIPTION	QTY.
1	COVER WORKLIGHT JCT 500/PLT	2
2	COVER WIRE CHANNEL VF-3/4	1
3	CVR SWIVEL 5 DEG TNL THRU BACK	1
4	MIST COLLECTOR COVER	1
5	BRKT SWIVEL EXT ROOF MT VF-5	1
6	CNVYR CBL CHNL REAR VF-5	1
7	BRKT PIVOT VF-5	1
8	SPACER THIN PENDANT	1
9	HOLDER WASH GUN	1
10	3/8 NPTF FULL FLOW BALL VALVE	1
11	FITG NPT-3/8-M X NPT-3/8-M 90 BR	1
12	FITG BKHD NPT-3/8 X 1.000 DIA	1
13	FITG NPT-3/8-F X NPT-3/8-M 90 BR	1
14	FITG NUT NPSM 1"-14 BRASS	1
15	CABLE CVR TP RT VF-3/4/5	1
16	FBHCS 1/4-20 X 1/2 SLF-TP W/LOCTITE PATCH	30
17	NUT 1/4-20 FLANGE W/NYLON PATCH Z	4
18	SHOULDER SCREW 1/4-20	1
19	SHCS 10-32 X 5/8 W/LOC 2ATHREADS ZINC PL	2
20	FRONT OF CONTROL CABLE COVER	1
21	PENDANT ARM VMC-M	1
22	PENDANT ARM COVER VMC-M	1
23	BASE DRAIN TUBE BRKT VMC-M	1
24	FBHCS 1/4-20 X 3/4 W/LOCTITE PTCH	2
25	SHOULDER SCREW 3/8-16	1

SHEET 7 OF 8

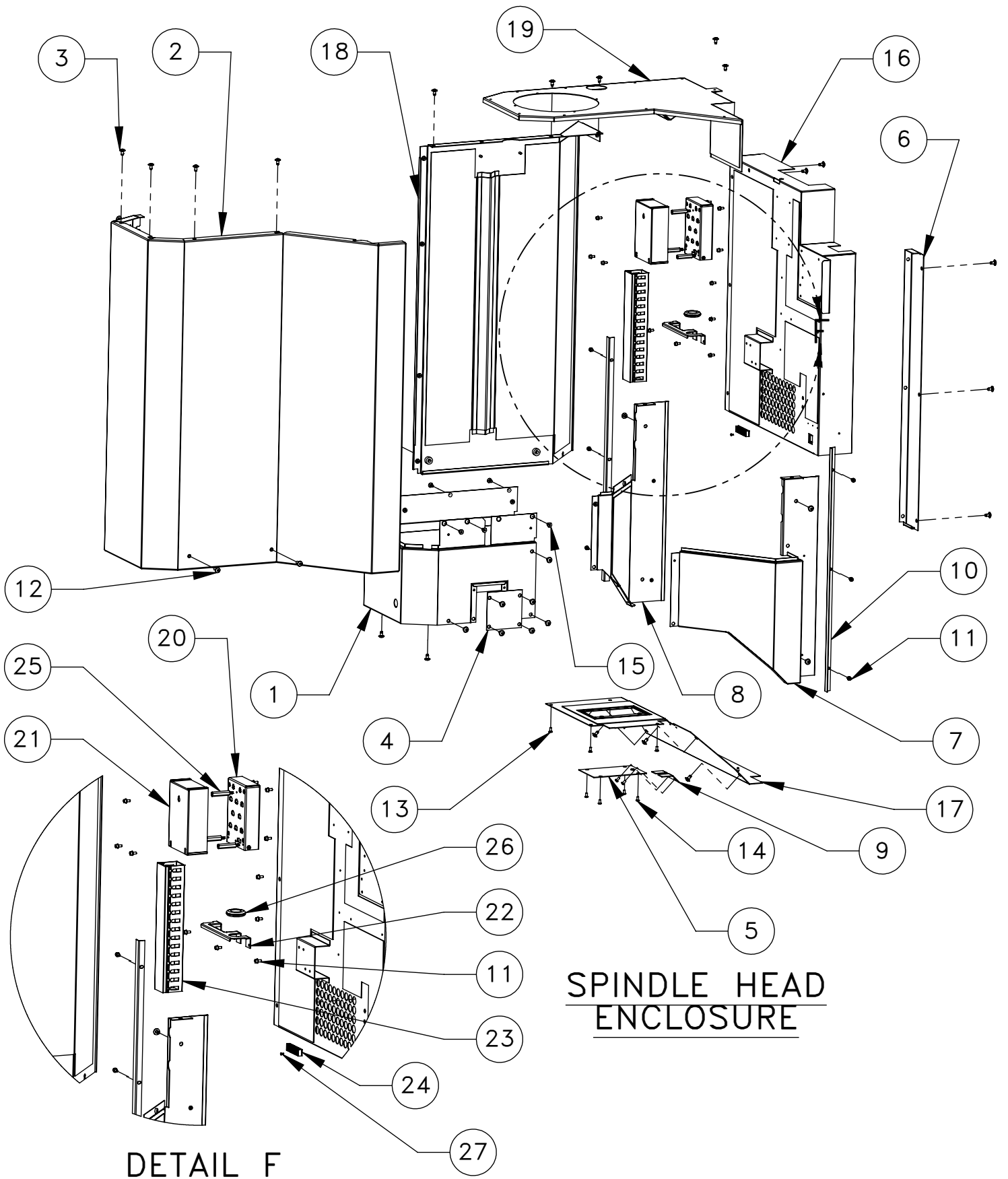
DESCRIPTION

EFFECTIVE DATE

VF-1 - VF-5 ENCLOSURE ASSEMBLY

MAY-2010

SAP DOC NO./VER: /



**SPINDLE HEAD
ENCLOSURE**

**DETAIL F
SCALE 1 : 12**

ITEM NO.	DESCRIPTION	QTY.
1	VF-5 LOWER HEAD COVER	1
2	VF-5 UPPER RIGHT HEAD COVER	1
3	FBHCS 1/4-20 X 1/2 SLF-TP W/LOCTITE PATCH	42
4	VF-1/2 LOWER HEAD COVER ACCESS	1
5	VP-5 INSPECTION COVER	1
6	VF-5 BACK RIGHT HEAD COVER	1
7	VF-3/4 LOWER HEAD COVER RIGHT	1
8	VF-3/4 LOWER HEAD COVER LEFT	1
9	BOTTOM COVER HOLE VF-3-4 70/BX	1
10	CHIP GUARD Z-AXIS VF-3/4 3000/ PALLET	2
11	SHCS 10-32 X 3/8 W/ FLAT WASHER OD 0.37-	21
12	FBHCS 1/4-20 X 3/4 W/LOCTITE PTCH	4
13	FHCS 10-32 X 1/2	4
14	BHCS 10-32 X 3/8 W/LESS CHAMFER	6
15	FHCS 1/4-20 X 1/2	6
16	VF-3/4 BACK HEAD COVER	1
17	VF-3/4 BOTTTOM HEAD COVER	1
18	VF-5 UPPER LEFT HEAD COVER	1
19	VF-5 TOP HEAD COVER	1
20	BRACKET, SPINDLE HEAD CONNECTOR	1
21	COVER, CONNECTOR BRACKET	1
22	CABLE ORGANIZER	1
23	HINGED WIRE CHANNEL 1.75X2IN PRECUT 1FT	1
24	TUBE SEPARATOR	1
25	STANDOFF, 10-32M X 10-32F X 1.75 LG	3
26	GROMMET 1ID X 1 3/8OD	1
27	4-40 X 1/4 FHP 82	3

SHEET 8 OF 8

DESCRIPTION

EFFECTIVE DATE

VF-1 - VF-5 ENCLOSURE ASSEMBLY

MAY-2010

SAP DOC NO./VER: /