

ITEM NO.	DESCRIPTION	QTY.
1	TOP PLATE, HIT210	1
2	HIT210 UNTESTED	1
3	DIE CAST J-BOX BTM BL	1
4	DIE CAST J-BOX TOP BL	1
5	BHCS 10-32 X 3/8 W/LESS CHAMFER	22
6	SHCS 8-32 X 1 3/4 ZINC PLATED	4
7	EYE BOLT, SHOULDER 1/2"-13 X 7/8"	1
8	O-RING 2-007 VITON V-1164-75	4
9	GASKET, MOTOR ENCL HIT210	2
10	WASHER, 1/2" ID X .125 THK X 1.125 OD, HARD, BLK OX #275-25	2
11	SHCS 1/4-20 X 1 1/4	8
12	MOTOR ENCLOSURE HIT210	1
13	SIDE COVER HIT210	1
14	BRACKET, BOARD MNT HIT210	1
15	ENCLOSURE COVER HIT210	1
16	SHCS 10-32 X 3/8 W/ FLAT WASHER OD 0.37-	14
17	WASHER FLAT 0.170IDX0.400OD	4
18	O-RING 2-176 BUNA	1
19	FITG BKHD NPT-1/4 X SILVR	2
20	FITG QUIK CONN-1/4X SILVR	1
21	SAE45-3/8 TUBE-CAP-NICKEL PLT BRASS	1
22	SAE45-3/8 TUBE X 1/4NPT-NICKEL PLT BRASS	1
23	STREET L 1/4M X 1/4F NPT	1
24	HAAS INDEX TABLE CCA	1
25	GASKET SQUARE J-BOX	1
26	PPHS 4-40 X 1/4	4
27	WASHER #4 INT LOCK PLT	4
28	GASKET AIR FITTINGS	2
29	FITG 1/8 NPTF PLUG PLATED 1000 PSI	1

SHEET 1 OF 2

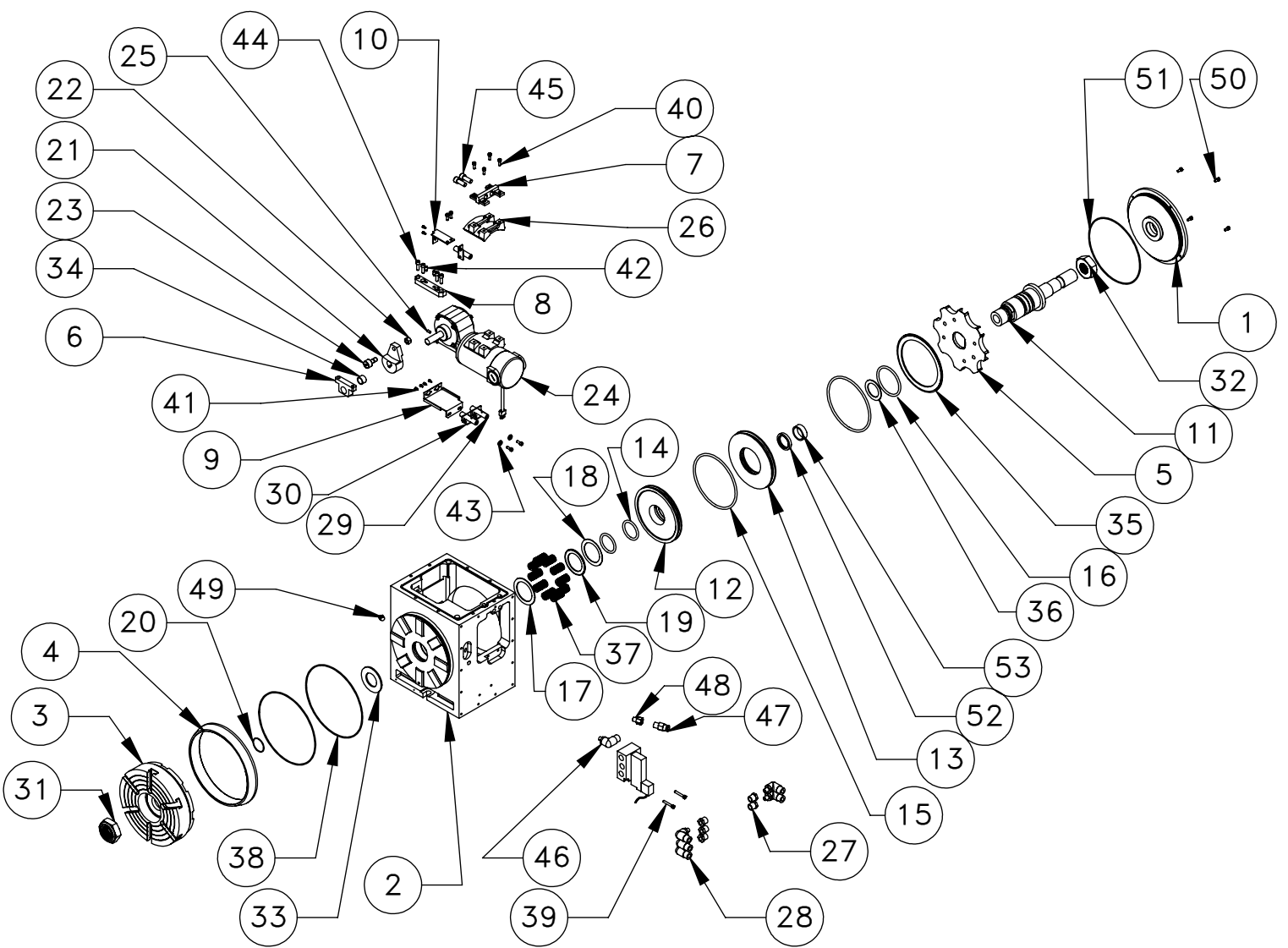
DESCRIPTION

EFFECTIVE DATE

HIT210 ROTARY TABLE

NOV-2006

SAP DOC NO./VER: 1000007142/01



DETAIL - HT210

ITEM NO.	DESCRIPTION	QTY.
1	COVER PLATE, REAR HIT210	1
2	BODY - MACHINED, HIT210	1
3	PLATTER, HIT210	1
4	PLATTER RING, HIT210	1
5	GENEVA STAR, 8 STN HIT210	1
6	SHAFT SUPPORT, HIT210	1
7	MOTOR MOUNT PLATE HIT210	1
8	SHAFT SUPPORT, ADJUSTER	1
9	PROX BRACKET, HOME HIT21025/BOX	1
10	PROX BRACKET INDEX MRK	1
11	SHAFT HIT210	1
12	GT-20 T/C UPPER PISTON	1
13	GT-20 T/C LOWER PISTON	1
14	O-RING 2-327 VITON	2
15	O-RING 2-358 VITON	2
16	O-RING 2-336 VITON	1
17	THRUST 2.125-2.875-0.0781	1
18	THRUST WASHER HIT210	2
19	RTNG RING 2.125 SH ROTO CLIP SH-21	1
20	O-RING 2-036 BUNA	1
21	DRIVER GENEVA 1 PIN	1
22	NUT 3/8-24 HEX	1
23	CAM FOLLOWER 3/4 HEX	1
24	33A-5R and 33A-5L Series DC Right Angle Gearmotor	1
25	SSS 10-32 X 3/8	2
26	Cust Properties	1
27	FITG REDUCER NPT-3/8-M X NPT-1/8-F	5
28	FITG LBO-3/8 X NPT-1/8-M X 90	5
29	PROX SW NO 2WR 1.0M WITH BRACKET	2
30	PROX SW NC 2WR 0.6M WITH BRACKET	1
31	NUT 1 1/2-6 JAM NYLOCK 13/16 MAX HEIG	1
32	NUT 1 3/8-12 JAM MCMMASTER 90494A	1
33	WASHER 1-3/8 STEEL ZINC 2-3/4OD,1-1/2	1
34	Cust Properties	1
35	RTNG RING 6.000 HO TRU-ARC N5000-6	1
36	THRUST WASHER TRB-2435	1
37	Cust Properties	10
38	O-RING 2-036 BUNA	2
39	SHCS 10-32 X 1 1/4	2
40	SHCS 10-32 X 1/2 ZINC PLATED	8
41	SHCS M3 X 5	6
42	SSS 1/4-28 X 1/2 FULL DOG	2
43	WASHER #8 FLAT SAE PLT	2
44	ME-0247 A40 SHCS1-4-20 x .75_BLK	4
45	SHCS 3/8-16 X 1	2
46	FITG LBO-3/8 X NPT-1/8-M X 90	1
47	FITG LBO 3/8 X 1/4 NPT-M STR AIR ONLY	1
48	FITG NPT-1/8-M X NPT-1/4-F STR	1
49	GREASE FITTING	1
50	SHCS 10-32 X 3/8 W/LOC 2ATHREADS ZINC PL	4
51	Cust Properties	1
52	SEAL 1.25 CR12340 1.756ODCR12340	1
53	Cust Properties	1