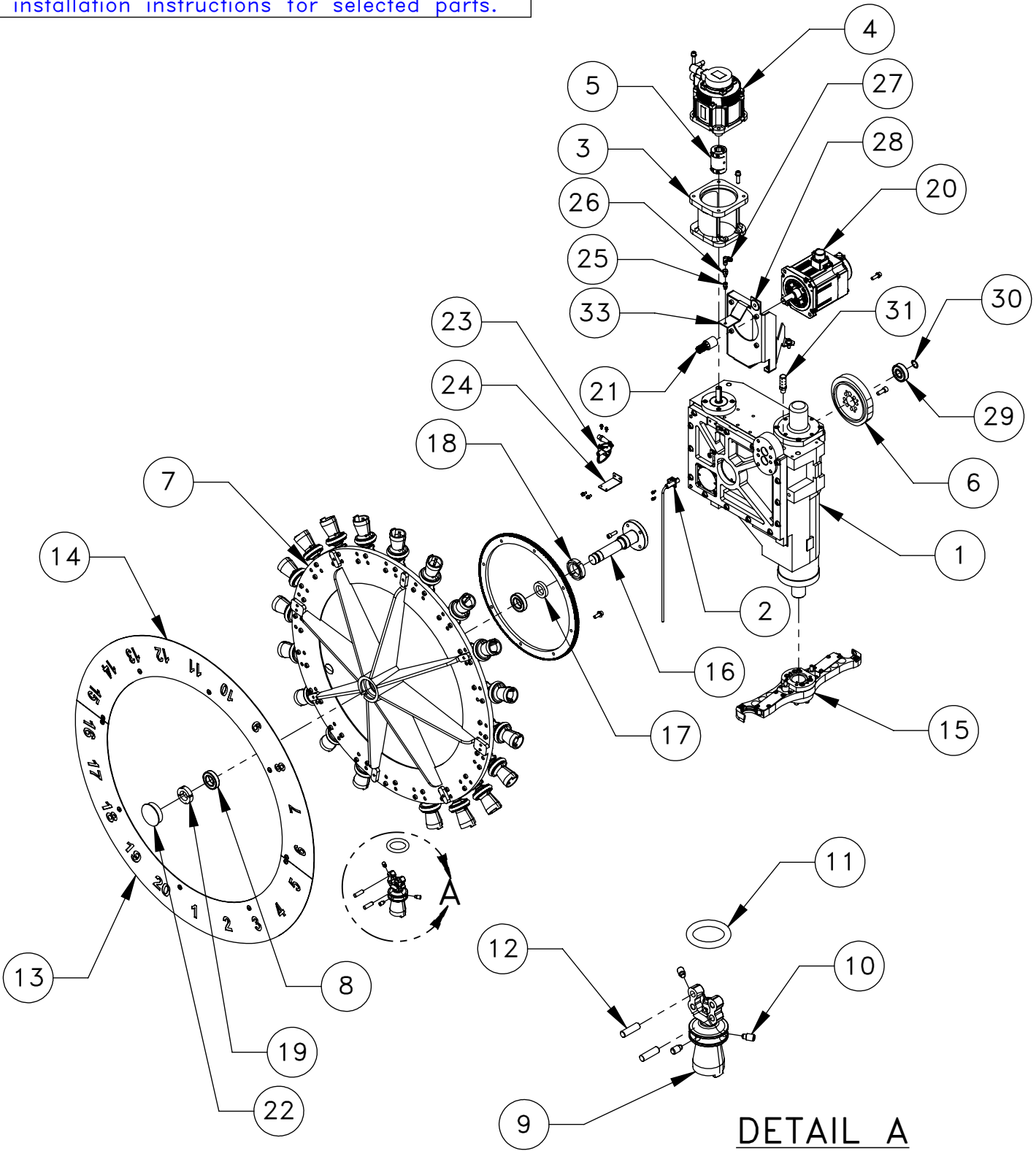


Go to parts.haascnc.com to get pricing and installation instructions for selected parts.



DETAIL A

ITEM NO.	PART NUMBER	PART DESCRIPTION	QTY.
1	30-11629	CAMBOX 40T DM-1	1
2	69-1801	PROX SW NC 3 WIRE 1.5' W/CONN	1
3	20-6227	MOTOR MOUNT, SMTC, 40T DT-1	1
4	62-10013	SRVOMTR YASK SIGMA-5 13 W/O BRAKE	1
5	51-0221	SOLID COUPLING 22MM/.625	1
6	20-6643	CAM FACE TOOL RELEASE SMTC 30T	1
7	20-5203C	SMTC 20PKT 30T CAROUSEL RING GEAR	1
8	51-0007	BEARING DEEP GROOVE	2
9	20-5204A	30T TOOL PKT MACHINING	1
10	20-0270A	PLUNGER TOOL POCKET SMTC40	3
11	59-0570	EXTENSION SPRING 3/8 X 5.5 X .045	1
12	48-0018	DOWEL PIN 3/8 X 1 1/4	2
13	25-11090	SMTC NUMBER PLATE 20 PKT 1-10 DT	1
14	25-11091	SMTC NUMBER PLATE 20 PKT 11-20 DT	1
15	30-4448	SMTC ARM 30T BT 8 INCH DT	1
16	20-4691A	SHAFT CAROUSEL SMTC DM-1	1
17	20-6578	EARING SPACER DM-1 SMTC CAROUSEL	1
18	51-10003	BEARING LOCKNUT N-08-F	1
19	51-0008	BEARING LOCKNUT N-06-F	1
20	62-10010	SRVOMTR YASK SIGMA-5 09 W/BRAKE	1
21	20-6569A	GEAR SPUR 16DP 10 TOOTH SMTC	1
22	59-0740	HOLE PLUG 2.5 GRAY	1
23	69-1801	PROX SW NC 3 WIRE 1.5' W/CONN	1
24	25-11016	HOME SWITCH BRACKET DM-1 CAROUSEL	1
25	30-11482	ORIFICE 5/16-24F X M6 X 1.0 X 6-32	1
26	58-0540	FITG, ADAPT 5/16-24-M BIJUR X 1/8 NPT-F	1
27	58-1494	FITG COMP 1/4 PTITE SWIVEL X 1/8 NPT 90	1
28	59-0700	GROMMET 3/8 ID 1.0 GROOVE 1/8 GROOVE WIDT	1
29	51-2025	BEARING DP GROOVE 6304 20ID X 52OD X 15	1
30	56-9058	RTNG RING .781 SH TRU-ARC 5100-78	1
31	58-1381	MUFFLER FREE FLOW 3/8 NPTM	1
32	25-11092	SMTC CAROUSEL MOTOR BRKT DT	1

Disclaimer: Not all parts are available for individual sale; Some are part of an assembly. Assembly configuration is subject to change without notice.

SHEET 1 OF 1

DESCRIPTION

EFFECTIVE DATE

DT-1/2 SMTC 20 Pocket 30 Taper

JULY-2016

SAP DOC NO./VER: 1000075141/01