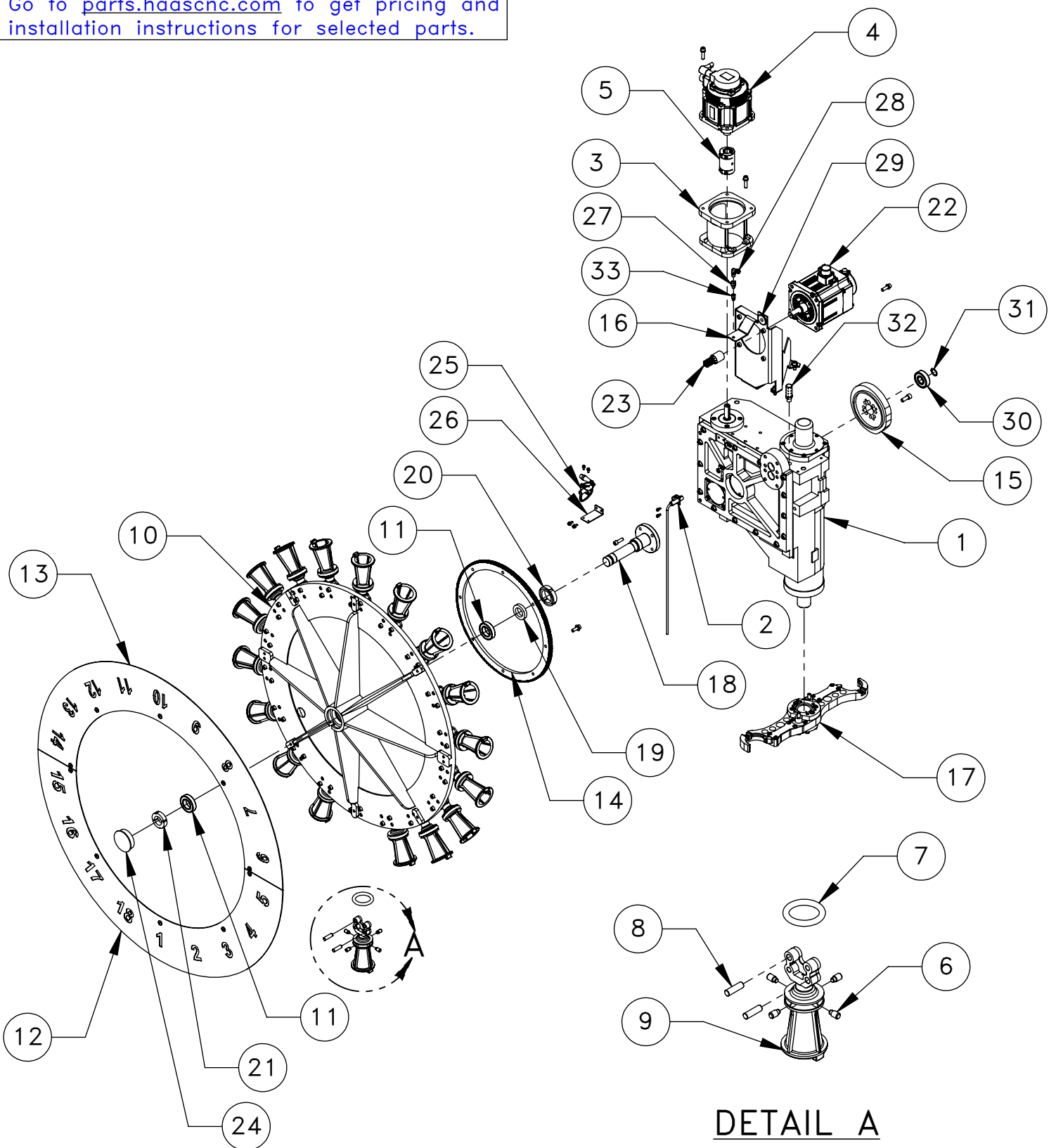


Go to parts.haascnc.com to get pricing and installation instructions for selected parts.



DETAIL A

ITEM NO.	PART NUMBER	PART DESCRIPTION	QTY.
1	30-11629	CAMBOX 40T DM-1	1
2	69-1801	PROX SW NC 3 WIRE 1.5' W/CONN	1
3	20-6227	MOTOR MOUNT, SMTC, 40T DT-1	1
4	62-10013	SRVOMTR YASK SIGMA-5 13 W/O BRAKE	1
5	51-0221	SOLID COUPLING 22MM/.625	1
6	20-0270A	PLUNGER TOOL POCKET SMTC40	4
7	59-0281	SPRING TOOL POCKET SMTC-40T	1
8	48-0018	DOWEL PIN 3/8 X 1 1/4	2
9	20-6580	TOOL PKT 40T DM-1 MACHINED FROM CASTING	1
10	20-6230D	SMTC 18PKCT 40T CAROUSEL RING GEAR	1
11	51-0007	BEARING DEEP GROOVE	2
12	25-11088	SMTC NUMBER PLATE 18 PKT 1-9 DM	1
13	25-11089	SMTC NUMBER PLATE 18 PKT 10-18 DM	1
14	20-6875A	GEAR SPUR 16DP 250 TOOTH SMTC	1
15	20-6224	CAM TOOL RELEASE SMTC 40T DM-1	1
16	25-11004	MOTOR MOUNT CAROUSEL SMTC DM-1	1
17	30-11622	SMTC ARM 40T CT 8 INCH	1
18	20-4691A	SHAFT CAROUSEL SMTC DM-1	1
19	20-6578	EARING SPACER DM-1 SMTC CAROUSEL	1
20	51-10003	BEARING LOCKNUT N-08-F	1
21	51-0008	BEARING LOCKNUT N-06-F	1
22	62-10010	SRVOMTR YASK SIGMA-5 09 W/BRAKE	1
23	20-6569A	GEAR SPUR 16DP 10 TOOTH SMTC	1
24	59-0740	HOLE PLUG 2.5 GRAY	1
25	69-1801	PROX SW NC 3 WIRE 1.5' W/CONN	1
26	25-11016	HOME SWITCH BRACKET DM-1 CAROUSEL	1
27	58-0540	FITG, ADAPT 5/16-24-M BIJUR X 1/8 NPT-F	1
28	58-1494	FITG COMP 1/4 PTITE SWIVEL X 1/8 NPT 90	1
29	59-0700	GROMMET 3/8 ID 1.0 GROOVE 1/8 GROOVE WIDT	1
30	51-2025	BEARING DP GROOVE 6304 20ID X 52OD X 15	1
31	56-9058	RTNG RING .781 SH TRU-ARC 5100-78	1
32	58-1381	MUFFLER FREE FLOW 3/8 NPTM	1
33	30-11482	ORIFICE 5/16-24F X M6 X 1.0 X 6-32	1

Disclaimer: Not all parts are available for individual sale; Some are part of an assembly. Assembly configuration is subject to change without notice.

SHEET 1 OF 1

DESCRIPTION

EFFECTIVE DATE

DM-1/2 SMTC 18 Pocket 40 Taper

JULY-2016

SAP DOC NO./VER: 1000075118/01