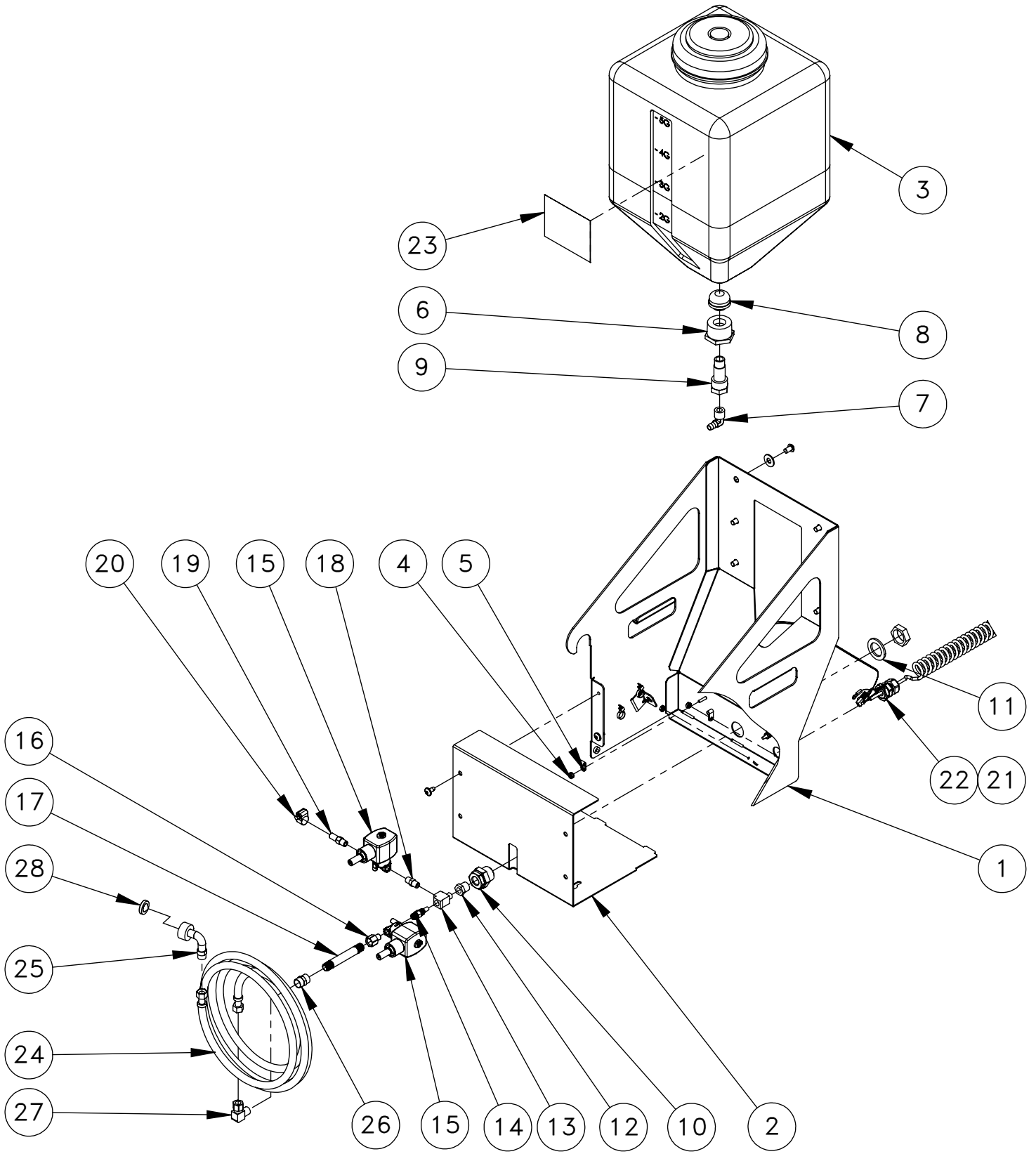


Go to parts.haascnc.com to get pricing and installation instructions for selected parts.



ITEM NO.	Part Number	PART DESCRIPTION	QTY.
1	25-10931	CHASSIS CRO	1
2	25-10932A	COOLANT REFILL OPTION COVER	1
3	59-1496	5G TANK PE 5" LID CRO	1
4	46-0006	NUT 8-32 HEX EXT KEP	4
5	63-1030	CABLE CLAMP 3/16 HEYCO 3353	3
6	58-1822	REDUCER 1-1/4NPTM X 3/4NPTF NYLON	1
7	58-1820	FITG HOSE BARB-3/8 X NPT-3/8-M 90	1
8	58-1749	GREASE STRAINER, 80 MESH 3/8 NPT	1
9	58-1978	FITG BLKHD NPT3/8M/F X NPT3/4M X 2-1/2L	1
10	58-1679	FITG BKHD NPT-3/8 X 1.000 DIA	1
11	45-0050	WASHER 1 STEEL .120THK X1.5620	1
12	58-3664	FITG REDUCER NPT-3/8-M X NPT-1/8-F	1
13	58-3002	FITG NPT-1/8-F X NPT-1/8MX NPT-1/8-F TEE	1
14	20-6616	NOZZLE VENTURI CRO	1
15	59-1308A	SOLENOID PURGE VALVE 2 WAY 1/8 NPT	2
16	58-3657	FITG NPT-1/8-M X NPT-1/4-F STR	1
17	58-1383	NIPPLE 1/4 NPT 3 1/2" BRASS Vibra Seal	1
18	58-16732	NIPPLE 1/8 NPT HEX BRASS PARKER 21	1
19	20-5630	NIPPLE HEX 1/8 NPTM X 3/8 SMOOTH	1
20	59-0027	HOSE CLAMP 1/2 HOSE MAH-4 SS	1
21	58-1819	HOSE 1/2 OD PE CLEAR X 1.1	1
22	32-1280	COOLANT REFILL SOL. COIL CBL	1
23	29-0360	DECAL HAAS LOGO 4	1
24	59-1508	HOSE ASSY 5/16ID COMP3/8F COMP3/8F 120"	1
25	58-1827	FITG GARDEN-3/4-F X COMP-3/8-M 90 BR	1
26	58-2065	FITG NPT-1/4-F X NPT-1/4-F X STR BRASS	1
27	58-3617	FITG COMP-3/8 X NPT-1/4-M 90 BR	1
28	57-0591	WASHER FILTER GARDEN HOSE	1

Disclaimer: Not all parts are available for individual sale; some are part of an assembly. Assembly configuration is subject to change without notice.

SHEET 1 OF 1

DESCRIPTION

EFFECTIVE DATE

COOLANT REFILL CRO

JAN-2015

SAP DOC NO./VER: 1000074058/01