



Way Cover - VMC - Wiper - Replacement

Scan code to get the latest version of this document



Translation Available



VMC - Telescopic Way Cover Wiper - Replacement - Introduction

This procedure tells you how to replace the wipers on the telescopic style way covers. To replace the telescopic way cover wipers, you must order the correct kit. Use the parts included section below to find the correct kit. Go to diy.haascnc.com to troubleshoot the way covers.

Prerequisites

Do this procedure for the X- or Y-Axis way covers. The images in this procedure are shown on the X-Axis way cover.

Parts Included



[A] 93-8500 QTY: 1
WIPER, TELESCOPIC WAYCOVER
0.200 THICK 24 FT (XY)



[A] 93-8505 QTY: 1
WIPER, TELESCOPIC WAYCOVER
0.200 THICK 58 FT (XY)



[A] 93-8510 QTY: 1
WIPER, TELESCOPIC WAYCOVER
0.081 THICK 23 FT (X)VF-4

Tools Required



Flathead Screwdriver



Rubber Mallet



Cutters



Leather Gloves



Red-I Grease (P/N 99-4520A)



RTV 502 Sealant (P/N 99-4452)

VMC - Telescopic Way Cover Wiper - Replacement

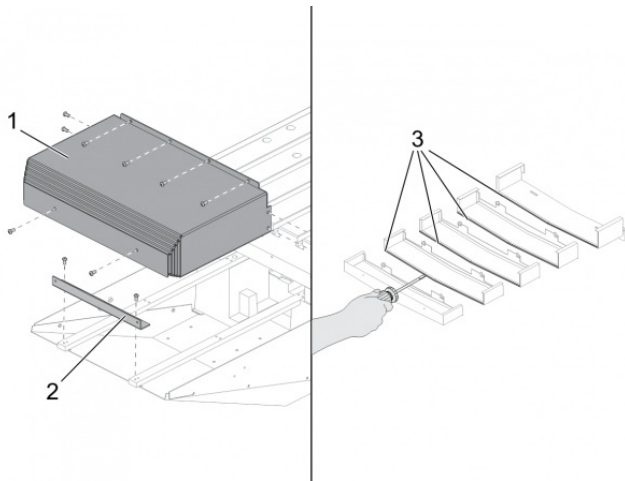
STEP 1



Push **[POWER OFF]**.

Set the main circuit breaker to the **[OFF]** position. Lock the main circuit breaker. Use an approved lock with an approved safety tag.

STEP 2



Remove these parts from the machine:

- Telescopic way cover [1]



Caution: The way cover has sharp edges. Use the leather gloves when you handle the way cover.

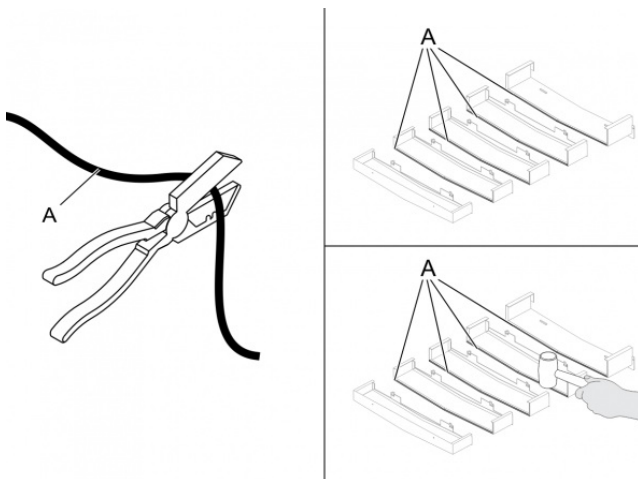
- L-bracket [2]

Turn the way cover upside down.

Remove each section of the way cover.

Use the flathead screwdriver to remove the way cover wipers [3].

STEP 3

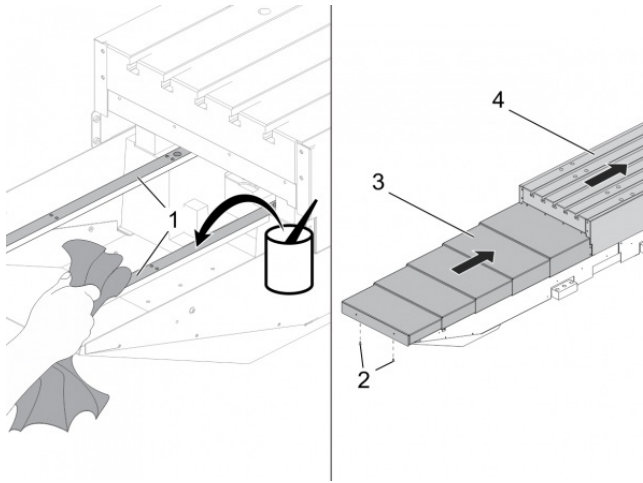


Use the cutters to cut the correct length of each **REPLACEMENT WIPER [A]**. Make sure the length is the same as the removed wipers.

Install the **REPLACEMENT WIPERS [A]**. Put Red-I grease on the **REPLACEMENT WIPERS [A]**. Use the mallet to tap the **REPLACEMENT WIPERS [A]** into the slots.

Install each section of the way cover.

STEP 4



Remove chips and debris from the linear guides.

Clean the table mounting surface.

Apply a thin coat of Red-I grease to the way cover guide bars [1].

Install the way cover over the guide bars.

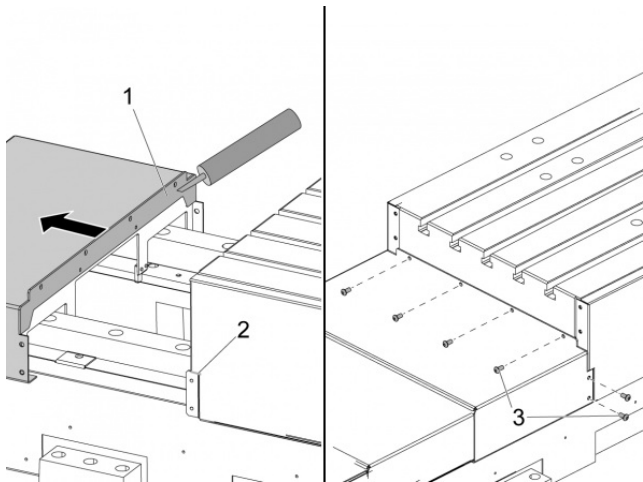
Attach the way cover end panel to the way cover guide bars. Use the (2) screws [2].

Move the table [4] to the full X-Axis travel.

Fully extend the sections of the way cover [3]. Make sure the way cover moves correctly and is the correct length.

Lightly spray a multi-purpose lubricant onto the tops and sides of each of the way cover panels.

STEP 5



Move the largest section of the way cover away from the table.

Put the RTV 502 sealant on the way cover where it touches the table mounting surface [1].

Put a small amount of RTV 502 sealant on the horizontal seam [2] between the way cover and the table.

Attach the way cover to the table with the (8) screws [3].

Remove any sealant that is squeezed out of the space between the way cover and the table.

Unlock the main circuit breaker. Set the main circuit breaker to the **[ON]** position.



Push **[POWER ON]**.

Check the X-Axis movement to make sure the way cover does not bind.