



# Standard Coolant – VMC, HMC - Washdown Hose - Swivel Fitting - Replacement

Scan code to get  
the latest version  
of this document

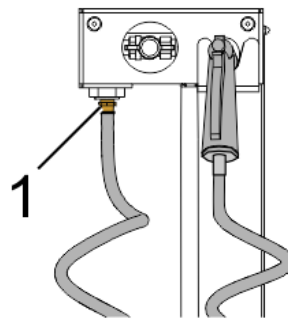


Translation  
Available



## Washdown Hose - Swivel Fitting - Replacement

This procedure tells you how to remove the swivel fitting on the washdown hose and install a barbed fitting [1]. Do this procedure if the swivel fitting has a leak.

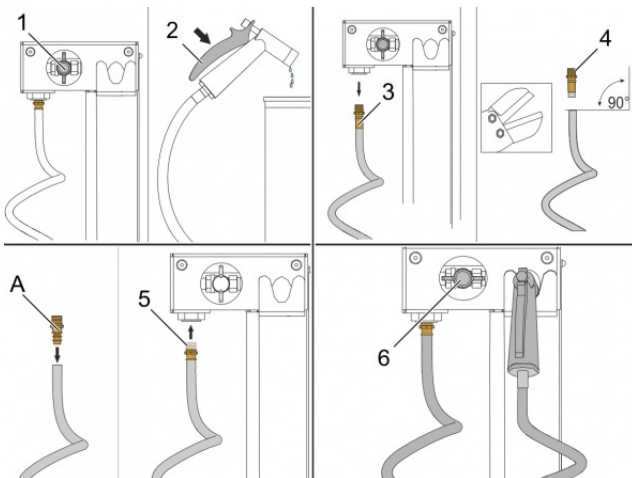


### Parts Included



**[A]** 58-1728 QTY: 1  
PUSH-ON TUBE FITG SWIVEL 1/2 X  
NPT-3/8-M

### STEP 1



Close the valve [1] for the washdown coolant hose.

Push the nozzle trigger [2]. This releases the coolant pressure and drains the hose.

Remove the hose [3] from the manifold assembly.

Cut the swivel fitting [4] off the hose. Be sure to cut the hose at 90 degrees.

Push the **SWIVEL FITTING [A]** fully into the hose.

Put thread sealing tape [5] on the threads of the **SWIVEL FITTING [A]**. Attach it to the manifold. Make sure you put thread sealing tape on all of the threaded fittings on the washdown hose.

Open the valve [6] for the washdown hose. Examine all of the fittings for leaks.