



# HPC-300 / TSC-300 / Auxiliary Coolant — Filter - Installation

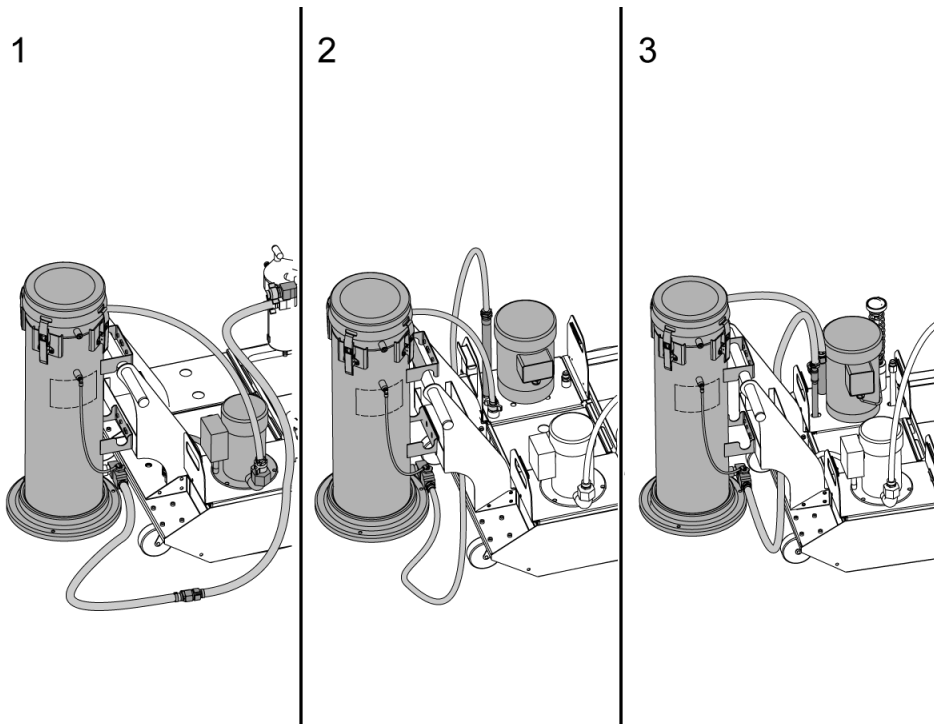
Scan code to get  
the latest version  
of this document



Translation  
Available


## Coolant - Auxiliary Coolant Filter - Installation - Introduction

This procedure tells you how to install an auxiliary coolant filter (AF) system. This #2 bag-type filter system removes contamination and small particles from the coolant before they go through the coolant pump again.



This procedure tells you how to connect the AF to these coolant systems:


- standard coolant pump [1]
- high pressure coolant (HPC)/Through-Spindle Coolant (TSC) 300 pump [2] with a secondary filter
- HPC/TSC 300/1K with an Auto-Clean pump [3]

 **Caution:** When you do maintenance or repair on CNC machines and their components, you must always follow basic safety precautions. This decreases the risk of injury and mechanical damage.

Do these steps before you do work in the machine or in the control cabinet:

- Set the main circuit breaker to the **[OFF]** position.
- Use an approved lock with an approved safety tag. Always follow lock-out procedures in accordance to local government rules.
- After turning off the machine, wait at least 5 minutes before working in the control cabinet, to allow power to dissipate. Wait for the voltage indicator LED on the vector drive to go off completely.
- Always turn off the main air supply when you work on any part of the pneumatic system.
- Make sure to rest the spindle head on a block of wood when work is done on a vertical axis. This will prevent any unintended movement that could result in the axis falling.
- Never alter any safety circuits on the machine.

You should not do machine repair or service procedures unless you are qualified and knowledgeable about the processes. Serious damage to the machine components can result in costly repairs. The service technicians at your Haas Factory Outlet (HFO) have the training and experience, and are certified to do these tasks safely and correctly. The repair and service work performed by your HFO is protected with a limited warranty.

 **Danger:** Some service procedures can be dangerous or life-threatening. DO NOT attempt a procedure that you do not fully understand. If you have any doubts about doing a procedure contact your Haas Factory Outlet (HFO) and schedule a service visit.

### Prerequisites

Put the auxiliary coolant filter (AF) system adjacent to the coolant tank. You can also attach the AF to the coolant tank handle.

### Machine Compatibility

Do this procedure for these machines:

- All machines excluding tool room mills and lathes.

### Parts Included

KIT PN: 93-8136, AUXILIARY FILTER KIT. QTY: 1



**[A]** 58-3668 QTY: 1  
FITTING, GARDEN 3/4M NPT3/4M  
BRASS



**[B]** 30-30200A  
QTY: 1  
HOSE, TSCHP PUMP ASSY. 1.13 FT



**[C]** 30-3231A QTY: 1  
AUXILIARY FILTER ASSY

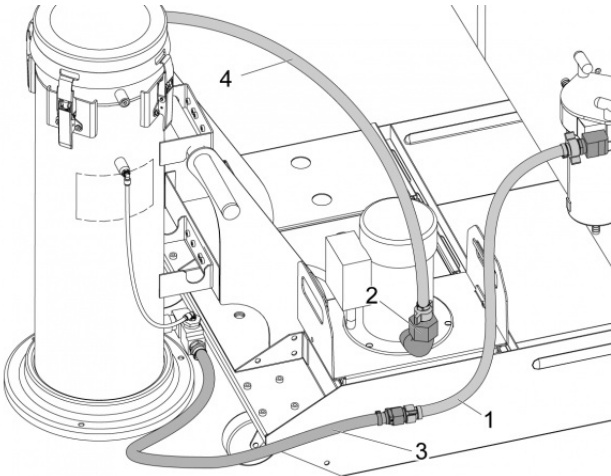
# Coolant - Auxiliary Coolant Filter - Installation

## Prerequisites

Do not apply thread sealant to the hose connections. This makes the hose difficult to remove.


 **Note:** The illustrations in this procedure show the installed configuration.

## STEP 1



If the machine has a standard coolant pump, do these steps:

- Disconnect the coolant supply hose [1], from the pump outlet [2].
- Connect the lower supply hose [3] to the coolant supply hose [1].
- Connect the upper AF hose [4] to the coolant pump outlet [2].
- Close the machine doors and windows.

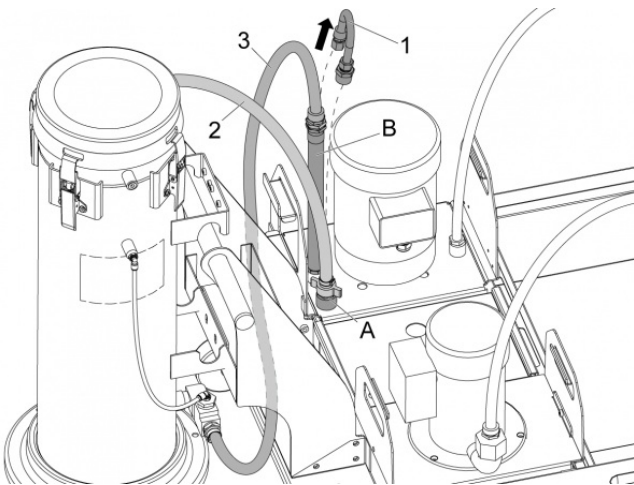
 **Note:** Coolant can splash in the machine.

- Close the valve for the p-cool/coolant lines. Start the coolant pump.
- While the coolant pump is on, open the AF lid.

 **Note:** This pushes the air out of the AF.


- Close the lid when the AF is full.

## STEP 2



If the machine has a HPC/TSC 300 pump with a secondary filter, do these steps:

- Remove the coolant return loop [1].
- Install the coolant hose adapter [A] to the 3/4" NPT port.
- Connect the upper AF hose [2] to the coolant hose adapter.
- Connect the 12" (30 cm) pump hose [B] to the 1/2" NPT port in the pump stand.
- Attach the lower AF hose [3] to the 12" (30 cm) hose [B].
- Close the machine doors and windows.

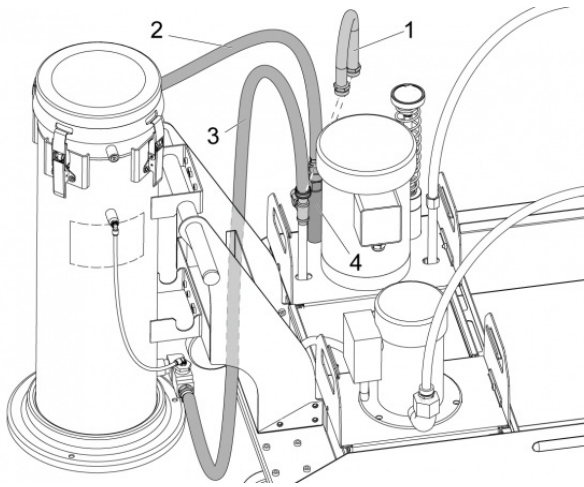
 **Note:** Coolant can splash in the machine.

- Close the valve for the p-cool/coolant lines. Start the coolant pump.
- Remove the AF lid while the coolant pump is on.
- Use the wash gun to fill the AF with the coolant.

 **Note:** This pushes the air out of the AF.

- Install the lid when the AF is full.

### STEP 3



If the machine has HPC/TSC 300/1K and an Auto-Clean pump, do these steps:

- Remove the coolant return loop [1].
- Connect the lower AF hose [3] to the swivel fitting on the outlet pipe.
- Connect the upper AF hose [2] to the stand pipe [4].
- Close the machine doors and windows.



**Note:** Coolant can splash in the machine.

- Close the valve for the p-cool/coolant lines. Start the coolant pump.
- Remove the AF lid while the coolant pump is on.
- Use the wash gun to fill the AF with the coolant.



**Note:** This pushes the air out of the AF.

- Install the lid when the AF is full.

### Conclusion

Operate the standard coolant pump for (5) minutes. Check for leaks.

For maintenance information, refer to [Auxiliary Filter - Bag Filter - Replacement](#).