

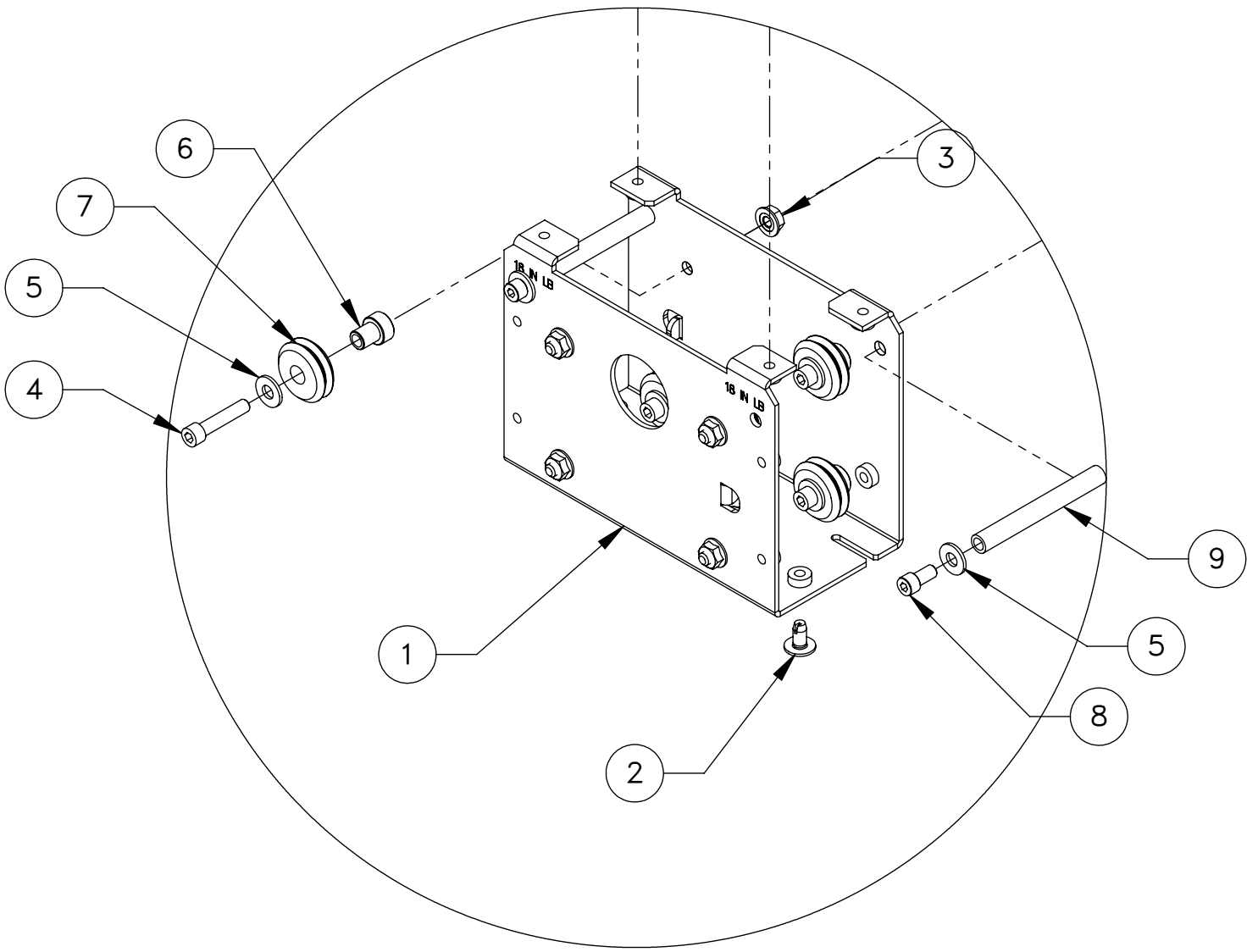
ITEM NO.	DESCRIPTION	QTY.
1	SPACER AUTODOOR DRIVEVF-1/2	1
2	CONNECTOR LINK VF SRVO ADOOR	1
3	MOTOR COVER SERVO AUTODOOR	1
4	LEFT WING VF-1 SERVO AUTODOOR	1
5	LEFT COVER VF-1 SERVO AUTODOOR	1
6	RIGHT COVER VF-1 SERVO AUTODOOR	1
7	RIGHT WING VF-1 SERVO AUTODOOR	1
8	MOTOR GUSSET SERVO AUTODOOR	1
9	MOTOR MOUNT SERVO AUTODOOR	1
10	SERVO AUTODOOR MOTOR ASSY SIGMA5	1
11	VEE RAIL MACHINED VF-1	4
12	RAIL BACK MOUNT VF-1 SERVO AUTODOOR	2
13	DOOR DRIVER SRVO ADOOR VF/SL	2
14	GEAR RACK MACHINED VF-1	2
15	CNCTR LINK SRVO ADOOR W/INTRLK	1
16	CE DOOR INTERLOCK ASSY B	1
17	CE INTERLOCK STRAIGHT KEY 7MM OT	1
18	INTERLOCK NUT PLATE SM-MED VMC	1
19	INTRLK SWTCH BRKT VF-1-5 ADOOR	1
20	INTRLK KEY BRKT VF-1-5 ADOOR	1
21	SHCS 10-32 X 1 1/2	4
22	PPHS 8-32 X 1/2	2
23	WASHER, #8 FLAT, SAE PLT	2

SHEET 1 OF 2

DESCRIPTION
VMC SERVO AUTO DOOR

EFFECTIVE DATE
JAN-2010

SAP DOC NO./VER: 1000004437/01



DETAIL
SCALE 1 : 3
WHEEL BOX

ITEM NO.	DESCRIPTION	QTY.
1	WHEEL BOX SERVO AUTODOOR	1
2	FBHCS 1/4-20 X 1/2 SLF-TP W/LOCTITE PATCH	20
3	NUT 1/4-20 FLANGE W/NYLON PATCH Z	12
4	SHCS 1/4-20 X 1 1/4	8
5	WASHER 1/4 FLAT A325 ZINC-PLATED	16
6	VEE WHEEL BUSHING SERVO AUTODOOR	8
7	VEE WHEEL SERVO AUTODOOR	8
8	SHCS 1/4-20 X 1/2 ZINC PLATED	10
9	WHEEL BOX SPACER ROD SRVO ADOOR	2

SHEET 2 OF 2

DESCRIPTION	EFFECTIVE DATE
VMC SERVO AUTO DOOR	JAN-2010
	SAP DOC NO./VER: 1000004437/01