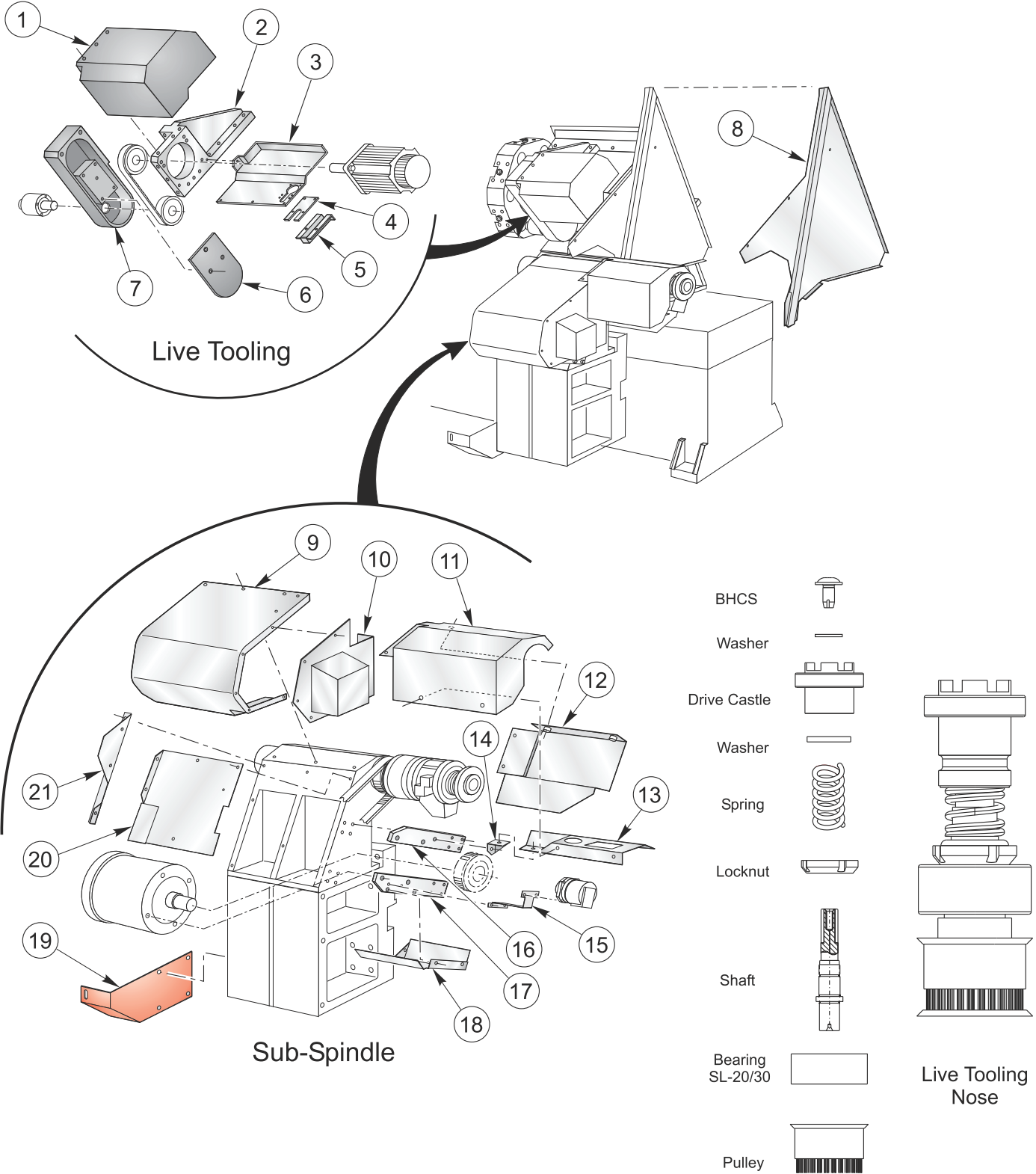




# TL-15 - Sub-Spindle / Live Tooling



## **Live Tooling**

- 1 Hood
- 2 Brace
- 3 Tray
- 4 Channel Cover
- 4a Channel Cover (Larger Turret)
- 5 Channel
- 5a Channel (Larger Turret)
- 6 Belt Arm Cover
- 7 Belt Arm

## **Sub-Spindle**

- 8 Moving Bulkhead
- 9 Motor Cover
- 10 Encoder Cover
- 11 Front Union Shroud
- 12 Rear Union Shroud
- 13 Bottom Union Shroud
- 14 Little Bracket
- 15 Encoder Bracket
- 16 Upper Motor Arm
- 17 Lower Motor Arm
- 18 Duct Shield
- 19 Shipping Bracket
- 20 Heat Shield
- 21 Fan Shield