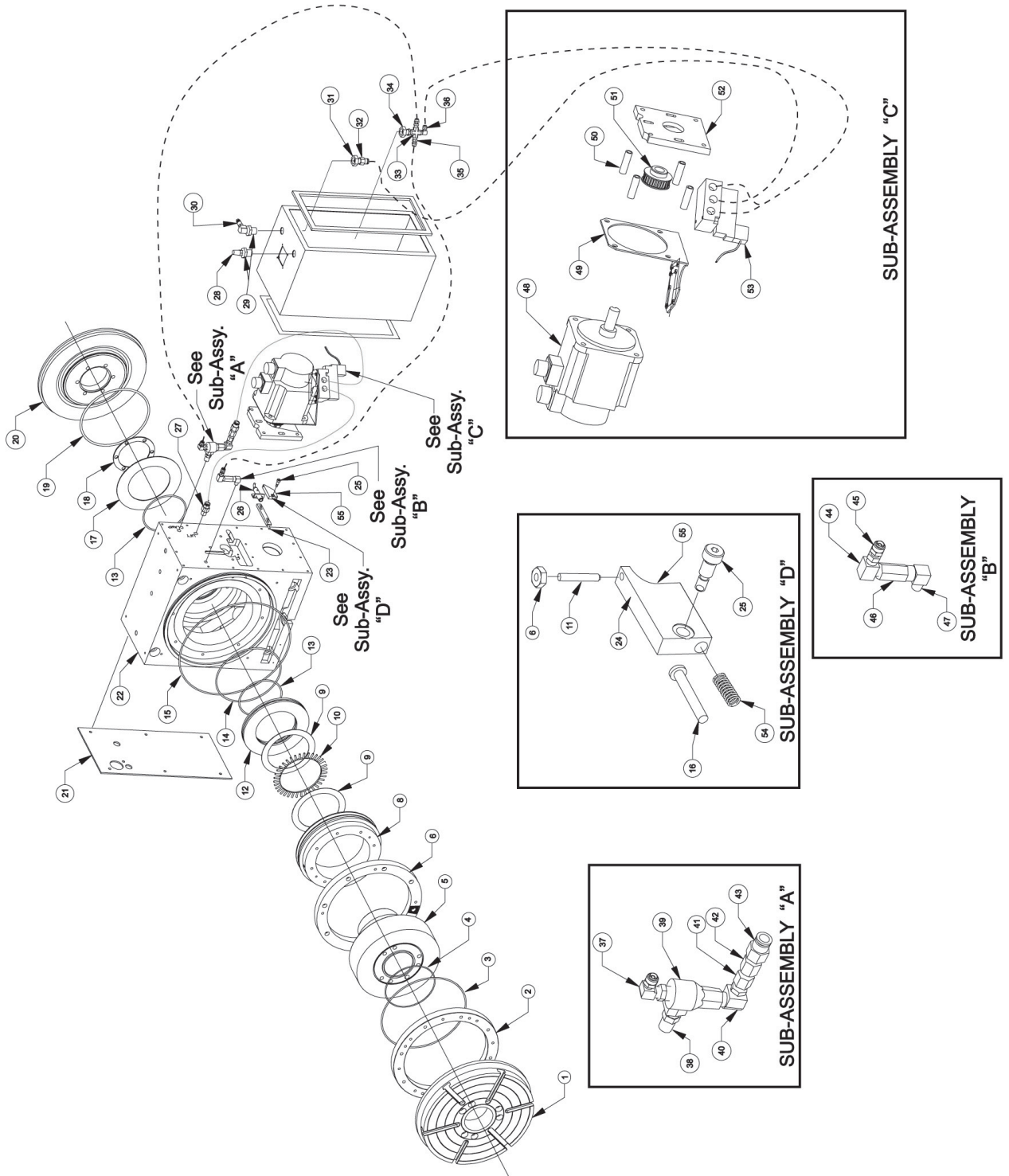




# HRT 320FB





## HRT 320FB

1.D.	QT	DESCRIPTION
1	1	PLATTER
2	1 SET	FACE GEAR
3	1	O-RING
4	1	O-RING
5	1	SPINDLE INDEXER
6	1	6-32 HEX NUT
7	1	SPINDLE SLEEVE
8	1	WORM GEAR
9	2	THRUST WASHER
10	1	THRUST BEARING
11	1	SET SCREW, 6-32 X 1 FULL DOG
12	1	UFT PISTON
13	2	O-RING
14	1	O-RING
15	1	O-RING
16	1	CLEVIS PIN 3/16 X 1.25
17	1	THRUST BEARING (NYLON)
18	1	SPINDLE SPACER
19	1	O-RING 2-365
20	1	BRAKE DISC
21	1	SIDE COVER
22	1	BODY
23	1	MOTOR ADJUSTMENT PLATE + SSS
24	1	CAM UFT TRIP
25	1	SHOULDER BOLT 1/4-20 X .375
26	1	PROX. SWITCH
27	1	STR 6 TUBE-4 MP
28	1	1/4 MUFFLER
29	2	ANCHOR4FP BODY
30	1	QUICK RELEASE FITTING, MALE RN
31	1	ANCHOR4FP NUT
32	1	STR 6 TUBE-4 MP
33	1	CROSS 1/8
34	1	ANCHOR4FP NUT
35	1	ANCHOR FP NUT
36	1	1/4 TUBE X 1/8 NPT ELBOW
37	1	1/4 TUBE X 1/8 NPT ELBOW
38	1	1/4 NPT MALE HX JOINT
39	1	QUICK EXHAUST 1/4
40	1	1/4 STREET ELBOW, 90 DEG.
41	1	ORFICE FITTING .020
42	1	FM ADAPTER
43	1	STR 6 TUBE-4 MP
44	1	1/4 STREET ELBOW, 90 DEG.
45	1	1/4 TUBE X 1/8 NPT
46	1	CHECK VALVE
47	1	MM ELBOW
48	1	YASKAWASGMG-09A2AB
49	1	MOTOR BRACKET
50	4	MOTOR, STAND OFF
51	1	32 TOOTH PULLEY, SIGMA09
52	1	MOTOR MOUNTING PLATE
53	1	SOLENOID VALVE, 5 WAY
54	1	SPRING, 1/2 X 1 X .029
55	1	CAM UFT TRIP
55	1	GASKET, MTR ENCL