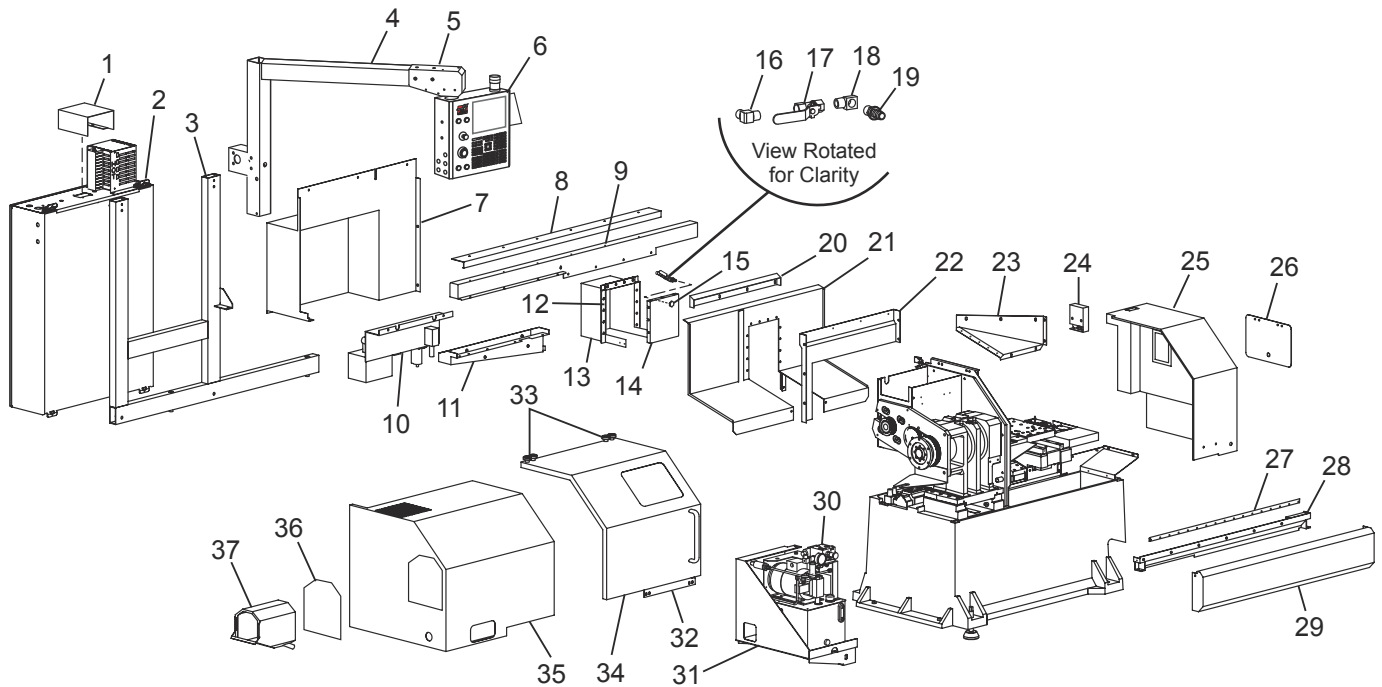




# GT-20 - External Enclosure



- |   |   |
|---|---|
| 1. Cable Exit Cover                           | 23. 25-7270A Z-Axis Right Waycover  |
| 2. Control Box Assy                           | 24. CE Lock Mount<br>CE Door Interlock  |
| 3. Control Mount                              | 25. Front Right Panel   |
| 4. Pendant Arm SB20                           | 26. Tool Box Door   |
| 5. Arm End Cap                                | 27. V-Track   |
| 6. Control Pendant Assy                       | 28. Bottom Door Track   |
| 7. Rear Right Panel                           | 29. Front Skirt   |
| 8. Top Door Retainer                          | 30. HPU Assy  |
| 9. Top Enclosure Support                      | 31. HPU Mount   |
| 10. Lube Rack Assy                            | 32. Lower Wheel Mount<br>2X Guide Wheel                                       |
| 11. Back Drain Trough                         | 33. 4X Radial Bearing Fafnir 303<br>4X Cam Follower Spacer                    |
| 12. 3X X-Axis Wiper Retainer                  | 34. Door<br>Door Handle<br>Door Window<br>Window Gasket<br>2X Window Retainer |
| 13. X-Axis Rear Waycover<br>X-Axis Wiper Felt | 35. Front Left Panel  |
| 14. X-Axis Rear Cover Front Plate             | 36. Coolant Collector Open Cover  |
| 15. Bulkhd Ftng NPT .375 x 1.000 in dia.      | 37. Chip Collector Housing  |
| 16. Male Elbow NPT .375 x .375 in.            |   |
| 17. Ball Valve NPT .375-F x .375 in.-F        |   |
| 18. Street Elbow NPT .375-F x .375 in.-M      |   |
| 19. Hose Barb Ftng NPT .50 x .375 in.-M       |   |
| 20. Top Door Splash Shield                    |   |
| 21. Z-Axis Sliding Cover                      |   |
| 22. Rear Splash Shield                        |   |