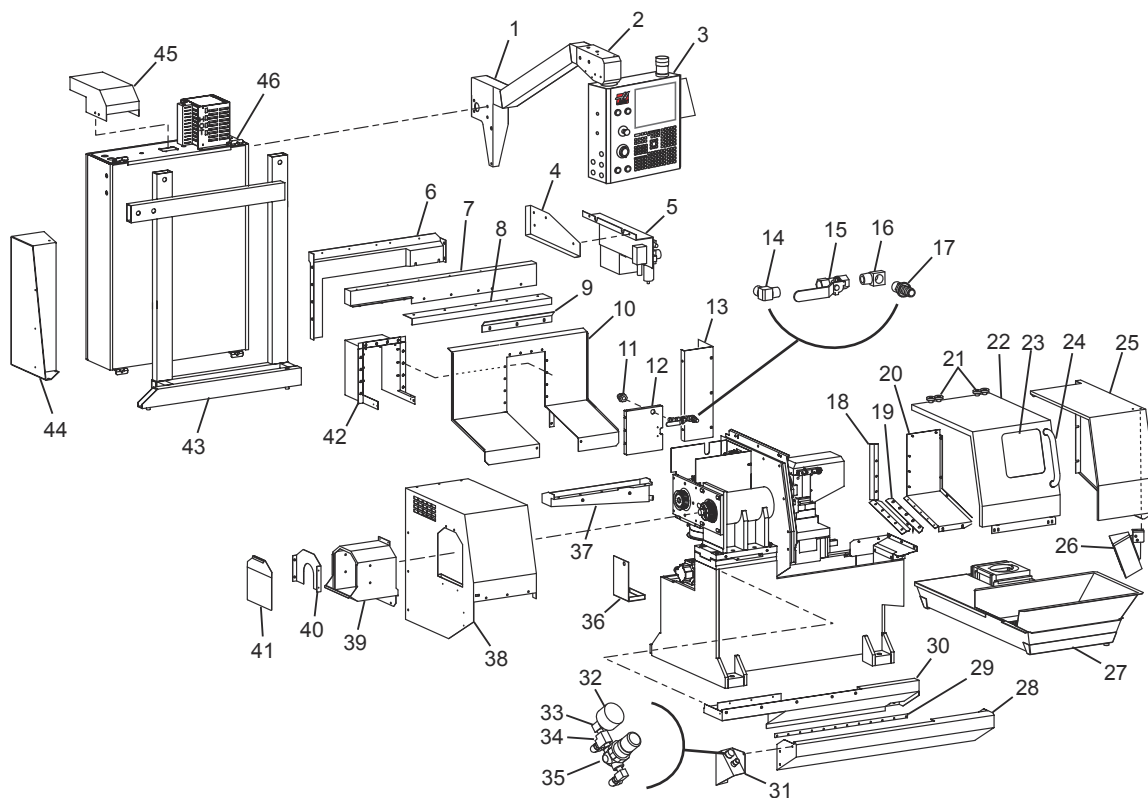




# GT-10 - External Enclosure



- |  |   |
|--|---|
| 1. Pendant Arm                           | 26. Worklight Housing                       |
| 2. Arm End Cap                           | Worklight Adjustable Bracket                |
| 3. Control Pendant Assy                  | 27. Coolant Tank Assy                       |
| 4. Lube Rack Support                     | 28. Front Skirt                             |
| 5. Lube Rack Assy                        | 29. V-Track                                 |
| 6. Rear Splash Shield                    | 2X Rail Spacer                              |
| 7. Enclosure Support                     | 30. BTM Door Track                          |
| 8. Door Retainer                         | 31. AC5C Air Regulator Housing Box          |
| 9. Top Door Splash Shield                | 32. Gauge 0-160 PSI x NPT.125 in. M Back    |
| 10. Z-Axis Sliding Cover                 | 33. 2X Street Elbow NPT .125-F x .125 in.-M |
| 11. Bulkhd Ftng NPT .375 x 1.000 in dia. | 34. Tee NPT .125-F x .125-M x .125 in.-F    |
| 12. X-Axis Front Panel                   | 35. Air Regulator 0-10 PSI Output           |
| 13. Rear Right Panel                     | NPT .125 in. Ports                          |
| 14. Male Elbow NPT .375 x .375 in.       | Elbow .250 x NPT .125 in.-M                 |
| 15. Ball Valve NPT .375-F x .375 in.-F   | 36. Tramp Oil Bottle Bracket                |
| 16. Street Elbow NPT .375-F x .375 in.-M | 37. Back Drain Trough                       |
| 17. Hose Barb Ftng NPT .50 x .375 in.-M  | 38. Front Left Panel                        |
| 18. Z-Axis Right Chip Shield             | 39. Chip Collector Housing                  |
| Z-Axis Right Waycover Scraper            | 40. Chip Collector Housing Support          |
| 19. RW CVR Scraper                       | 41. Chip Collector Door                     |
| 20. Z-Axis Right Waycover                | 42. X-Axis Rear Waycover                    |
| 21. 4X Radial Bearing Fafnir 303         | 3X X-Axis Wiper Retainer                    |
| 4X Cam Follower Spacer                   | X-Axis Wiper Felt                           |
| 22. Door                                 | 43. Control Mount                           |
| 23. Front Window                         | 44. Left Control Support Bracket            |
| 2X Window Retainer                       | 45. Cable Exit Cover                        |
| 24. Door Handle - Chrome                 | 46. Control Box Assy                        |
| 25. Right Front Panel                    |   |