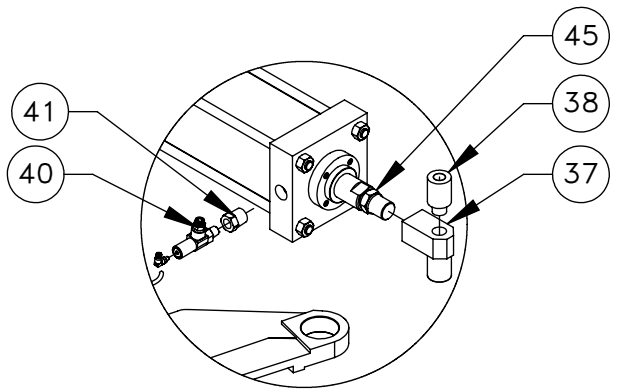
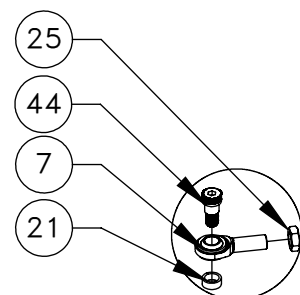


SEE SHEET 2 FOR
EXPLODED VIEW AND
DETAILS

ITEM NO.	DESCRIPTION	QTY.
1	BEARING HOUSING T/C	1
2	T/C REAR MOUNT	1
3	LINK T/C	1
4	CAROUSEL MOUNTING PLATE	1
5	BEARING SPHERICAL RODEND 3/4M LH	2
6	TOOL CHANGER COVER TC32	1
7	BRACKET DAMPER T/C	1
8	DAMPER MOUNT TRIANGULAR	1
9	DAMPER ENERTROLS SASL	2
10	SHAFT T/C PIVOT	1
11	SHAFT T/C PIVOT SHORT	1
12	T.C. PIVOT WASHER	2
13	BEARING HOUSING	1
14	AIR CYL 5.0 X 17.50	1
15	GENEVA STAR 32TOOL 2 PIN	1
16	R BRG RAD BALL M15-35-11	2
17	GENEVA DRIVE MTR 37RPM 90VDC 74IN LBS	1
18	T/C CYL SPACER BOTTOM	1
19	PROX NC SHUT IN 30 W/ STRN RLF	1
20	R BRG TAPR ROLR M50-80-24	4
21	SPACER LINK T/C	2
22	NUT 3/4-16 LH JAM	2
23	BEARING LOCKNUT BH-06	1
24	SHCS 1/4-20 X 5/8 ZINC PLATED	3
25	LOCATING PIN	1
26	NUT 3/4-10 NYLON LOCK	1
27	WASHER 3/4 FLAT USS PLT	1
28	NUT 3/4-16 HEX	2
29	WASHER 3/4 SPLT LOCK PLT MED	2
30	T. C. SEAL SPACER	4
31	SEAL 2.500 NATIONAL 473476 3.150 O.	4
32	SPACER RING TOOL CHANGER	2
33	TOOL #1 STANDOFF	1
34	DOOR T/C COVER	1
35	FITG LBO-3/8 X LBO-3/8 X NPT-1/2-M TEE	1
36	FITG LBO-5/32 X LBO-3/8-M REDUC	1
37	51-10062 ROD END EYE 3/4 3/4-16F	1
38	T/C CYLINDER SPACER, FRONT	2
39	COLLAR STOP DAMPER ENERTROLS 3136-	2
40	VALVE CHECK LBO-1/4 X NPT-1/4-M PILOT	1
41	FITG REDUCER NPT-1/2-M X NPT-1/4-F	1
42	T/C CYLINDER SPACER TOP	1
43	T/C LINK SHAFT	1
44	SHLDR BOLR 3/4 X 1 1/2	1
45	NUT 3/4-16 JAM	1
46	T/C BRACE	1
47	ENCLOSURE TURRET MOTOR	1



DETAIL A
SCALE 1 : 10



DETAIL B
SCALE 1 : 10

SHEET 1 OF 2

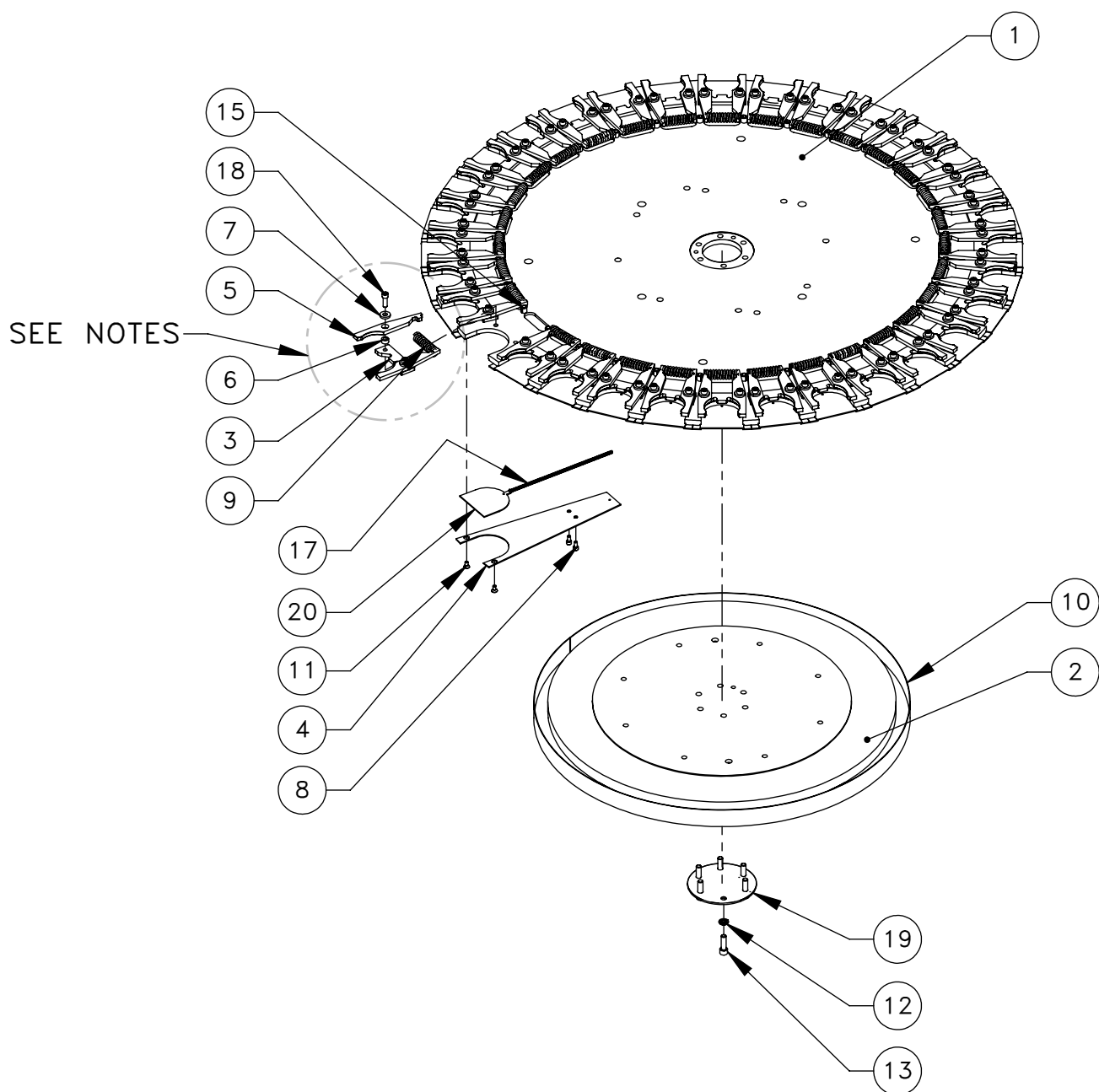
DESCRIPTION

EFFECTIVE DATE

VR UMBRELLA TOOL CHANGER 32 POCKET 40 TAPER

JUNE-1997

SAP DOC NO./VER: 1000010947/01

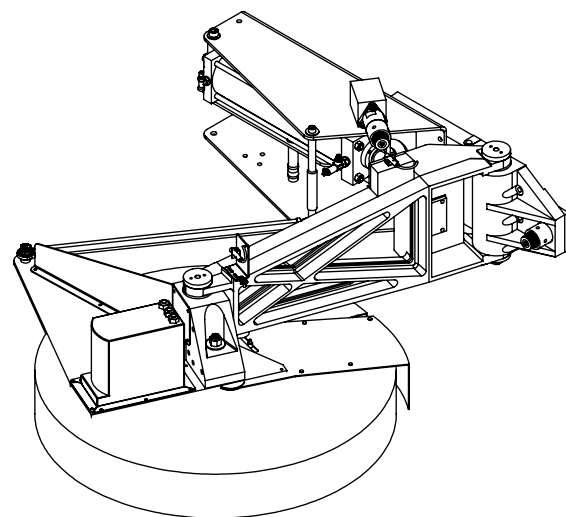


CAROUSEL ASSEMBLY 32TL BT

NOTES:

1. COMPONENTS NO.: 3, 6, 7, 8, 10, 16 AND 19 ARE CT CONFIGURATION. SEE HAAS SERVICE SITE FOR OTHER REFERENCES ON BT CONFIGURATION

ITEM NO.	DESCRIPTION	QTY.
1	CAROUSEL 32 TOOL VB-1	1
2	CAROUSEL SUPPORT PLATE	1
3	KEY EXTRACTOR SPRING	32
4	32TL SLNG PNL CVR PIE SHP100/12X12X12"	32
5	BT EXTRACTOR, CAROUSEL TOOL CHANGER	64
6	BUSHING EXTRACTOR	64
7	WASHER 1/4 HARD 1/4ID X 5/8OD X 1/8 THK	64
8	SHCS 10-32 X 3/8 W/LOC 2ATHREADS ZINC PL	64
9	SPRING EXTRACTOR HORIZ HS TOOL CHANGER	32
10	NUMBER RING 32 T/C	1
11	FHCS 10-32 X 3/8	64
12	WASHER 5/16 SPLT LOCK PLT	6
13	SHCS 5/16-18 X 1	6
14	DOWEL PIN 1/4 X 5/8	1
15	ROLL PIN 3/8 X 3/4	32
17	COMPRESSION SPRING T/C DOOR SPRING	32
18	SHCS 1/4-20 X 3/4 LOCTITE BLACK OXIDE	64
19	CAP TOOL CHANGER	1
20	SLIDING PANEL	32



SHEET 2 OF 2

DESCRIPTION

EFFECTIVE DATE

VR UMBRELLA TOOL CHANGER 32 POCKET 40 TAPER

JUNE-1997

SAP DOC NO./VER: 1000010947/01