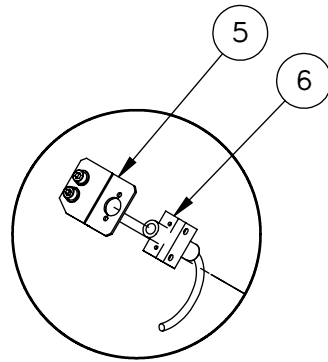
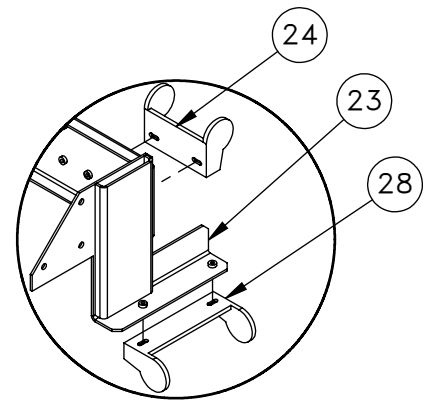


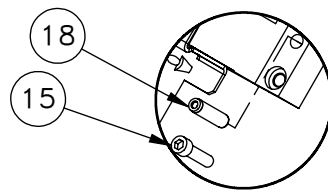
DETAIL A
SCALE 1 : 5



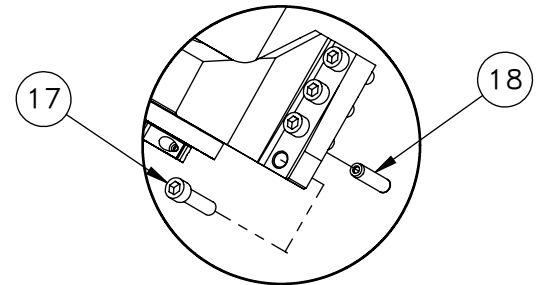
DETAIL B
SCALE 1 : 5



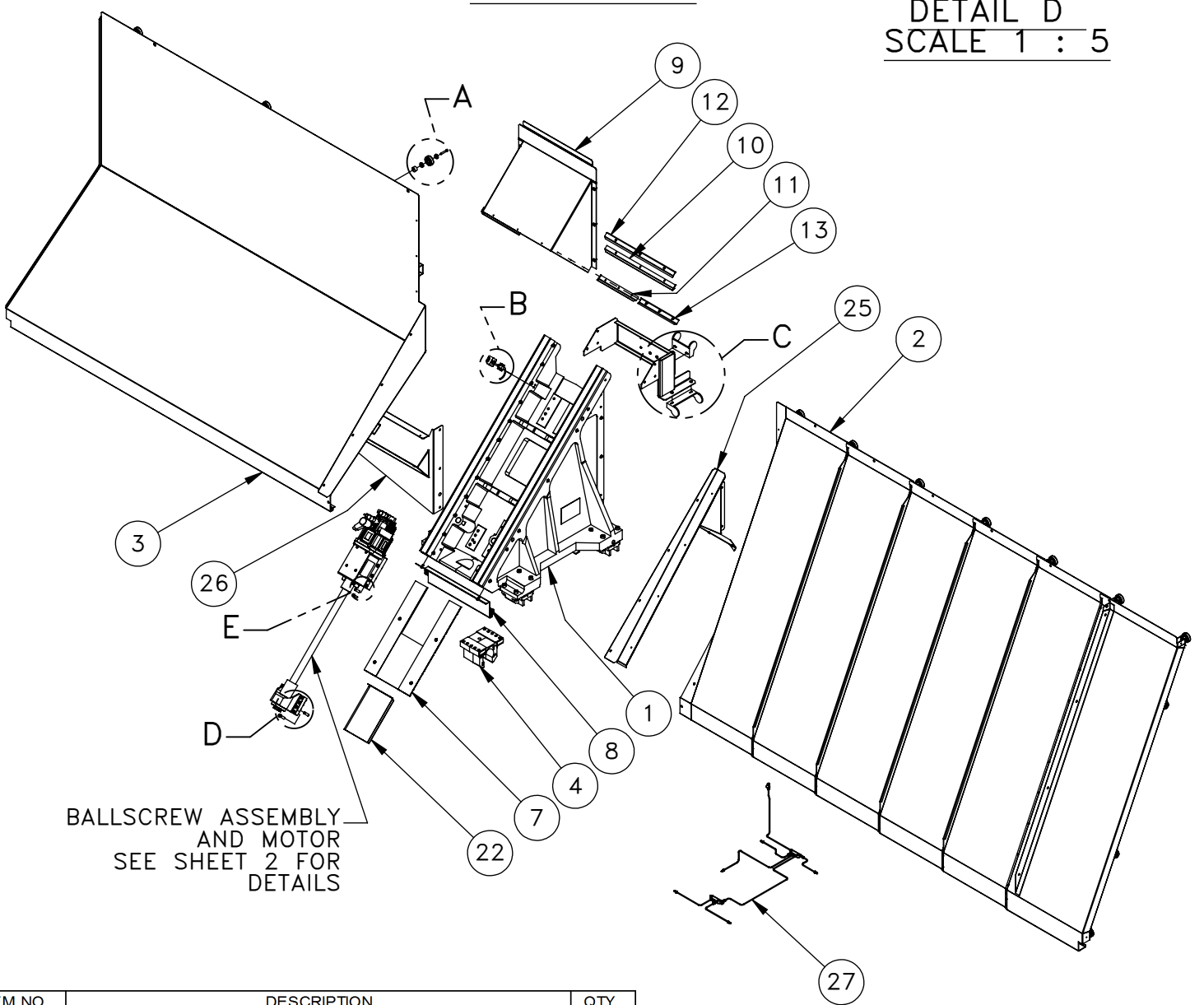
DETAIL C
SCALE 1 : 10



DETAIL E
SCALE 1 : 5



DETAIL D
SCALE 1 : 5



BALLSCREW ASSEMBLY
AND MOTOR
SEE SHEET 2 FOR
DETAILS

ITEM NO.	DESCRIPTION	QTY.
1	WEDGE MACHINED, ST-40/40L	1
2	RIGHT Z TELESOPING CVR ASSY, ST-40L	1
3	LEFT Z SLIDING COVER, ST-40L	1
4	NUT HOUSING Z-AXIS, MACHINED EC-630	1
5	MOUNTING BRACKET	1
6	PROX SW NC 2WR 1.0M W/BRKT NONSH 4M	1
7	BSCREW COVER, X-AXIS, ST-40/40L	1
8	FRONT WEDGE COVER, ST-40/40L	1
9	X-AXIS WIPER BOX, ST-40/40L	1
10	TOP X FELT WIPER, ST-40	1
11	SIDE X FELT WIPER, ST-40	2
12	TOP X WIPER RETAINER, ST-40/40L	1
13	SIDE X WIPER RETAINER, ST-40/40L	2
14	SHCS 1/4-20 X 1 1/2	3
15	SHCS 5/16-18 X 1 1/4 DOMESTIC ONLY	6
17	SHCS 3/8-16 X 1 1/2 W/BUE LOCTITE	8
18	DOWEL PIN 3/8 X 1 1/2 PULL	4
19	SPACER CAM FOLLOWER	3
20	TOP DOOR SPACER	6
21	R BRG RAD BALL M17-47-14	3
22	X-AXIS LOWER SLIDING COVER, ST-40	1
23	CABLE CARRIER BRACKET, WEDGE, ST-40/40L	1
24	CABLE CARRIER BRACKET, WEDGE, ST-40/40L (REAR)	1
25	BRACKET, Z TELS PNG CVR SPRT, ST-40/40L	1
26	BRKT, SLIDING COVER SUPPORT, ST-40/40L	1
27	Z AXIS GREASE COPPER LINES ST40	1
28	CABLE CARRIER BRACKET, WEDGE, ST-40/40L (BOTTOM)	1

SHEET 1 OF 2

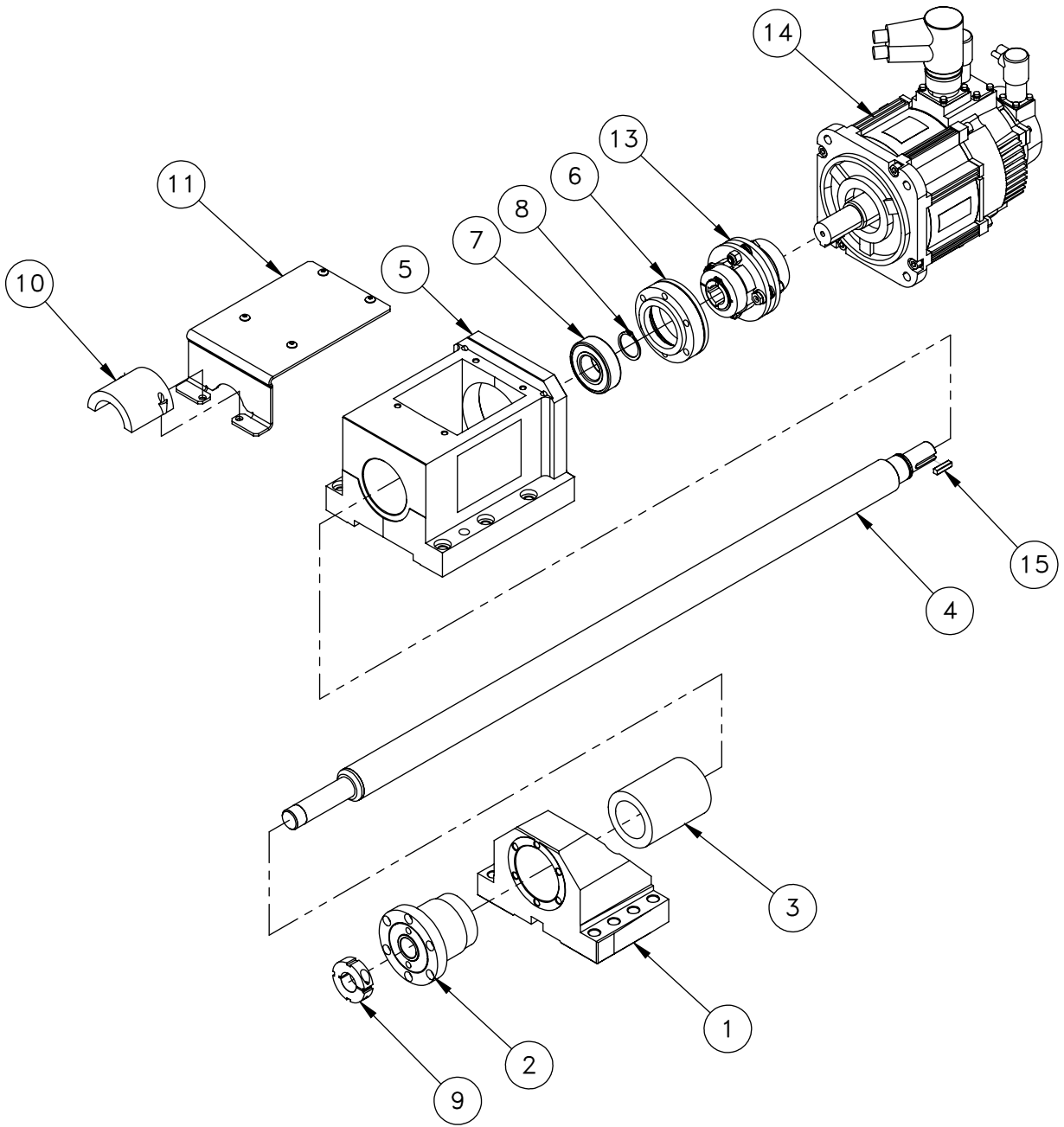
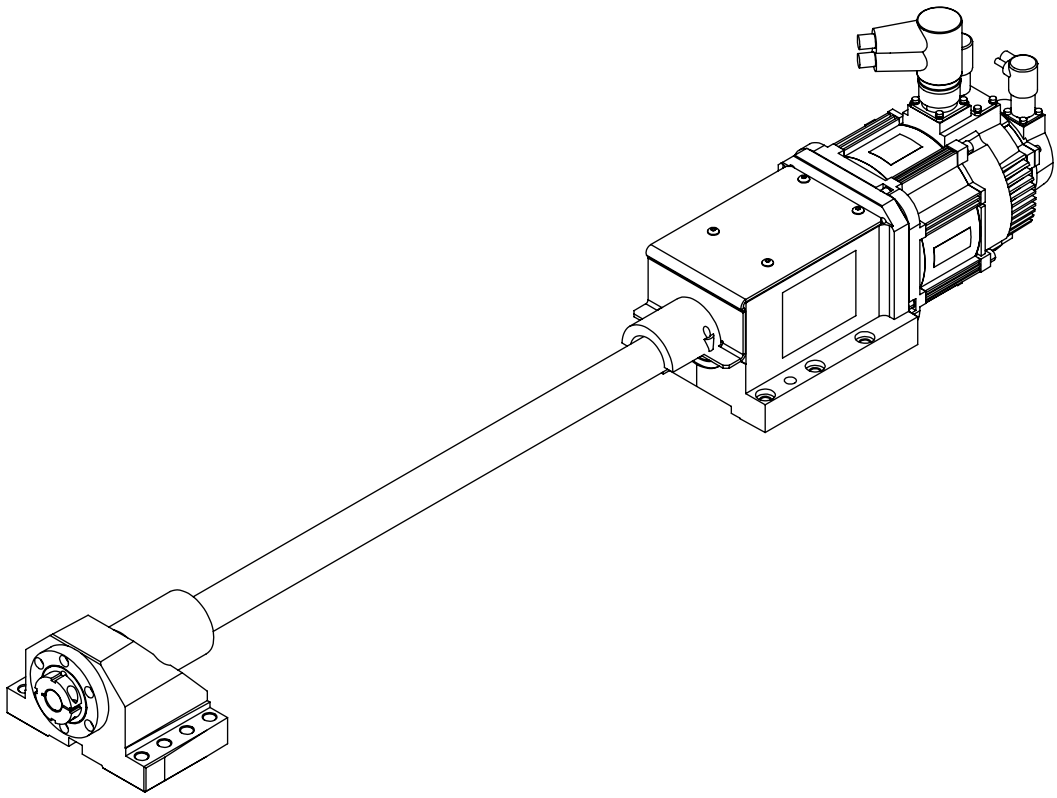
DESCRIPTION

EFFECTIVE DATE

ST-40L WEDGE ASSEMBLY

SEPT-2013

SAP DOC NO./VER: 1000030031/01



ITEM NO.	DESCRIPTION	QTY.
1	THRUST BEARING HSNG 32MM REV ANCHOR LG	1
2	MOTOR HSNG BEARING ASSY 32MM	1
3	RING BUMPER 3.00	1
4	BSCREW 32-6-831 REVERSED X-AXIS	1
5	MACHINING MOTOR MOUNT, 32 MM BALL SCREW	1
6	ADAPTOR BRNG RACE 52MM	1
7	BEARING DP GROOVE 6205 25ID X 52OD X 15	1
8	RTNG RING 1.000 SH TRU-ARC 5100-100	1
9	BEARING LOCKNUT TCN-04-F RULAND MFG ONLY	1
10	BUMPER BLSCRW VF-3 SPPT END	1
11	BUMPER SUPPORT REVERSED B SCREW, ST-40	1
12	BHCS 10-32 X 3/8	4
13	COUPLING ASY 19/22M	1
14	SRVOMTR YASK SIGMA-5 13 W/BRAKE	1
15	KEY STUB SHAFT/WORM SHAFTCHIP CONVEYOR/S	1

SHEET 2 OF 2

DESCRIPTION

EFFECTIVE DATE

ST-40L WEDGE ASSEMBLY

SEPT-2013

SAP DOC NO./VER: 1000030031/01