



# Next Generation Control - Wireless Network - Installation

Scan code to get the latest version of this document



Translation Available



## Next Generation Control - Wireless Network - Antenna Installation

This procedure tells you how to install WiFi on a control cabinet.

### Prerequisites

For general information about wired or wireless networks refer to:

- [Haas Machines in a Network](#).
- [Next Generation Control - Networking Option - Icons](#).

### Parts Included

KIT PN: 93-2488, WIFI CONNECTION FOR HAAS CONTROL, NGC. QTY: 1



**[A]** 77-0512 QTY: 1  
CABLE SMA/SMA-JACK 18" RG-316



**[B]** 63-0100 QTY: 1  
DOME PLUG .75" DIA W/.25" HOLE IN CENTER



**[C]** 99-1621 QTY: 1  
2.4GHz 7dBi Antenna 4-5ft M conn

### STEP 1

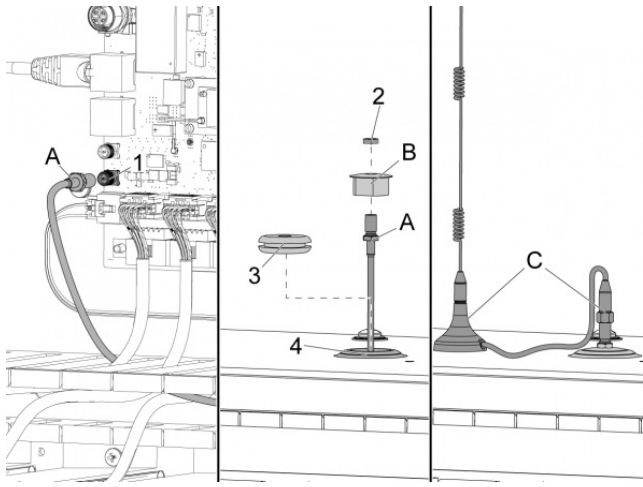


Push **[POWER OFF]**.

Set the main circuit breaker to the **OFF** position.

Lock the main circuit breaker. Use an approved lock with an approved safety tag.

## STEP 2



In the control cabinet connect the SMA/SMA-Jack 18" RG-316 CABLE **[A]** to J2 **[1]** on the main control.

Remove the plug **[3]** from the hole **[4]** on top of the control cabinet. Install the DOME PLUG **[B]** in the hole **[4]**.

Remove a nut **[2]** from the other end of the cable. Put the cable through the DOME PLUG **[B]**. Use the removed nut **[2]** to tighten the cable.

Connect the ANTENNA **[C]**. Put the antenna as high on the machine as possible. Do not put the antenna close to the regen assembly.

Set the main circuit breaker to the **ON** position.




Push **[POWER ON]**.

# Next Generation Control - Wireless Network - Connections

This procedure tells you about the settings you use to connect a machine with the Next Generation Control to a wireless network.

## Prerequisites

The machine can connect to a 2.4 GHz, 802.11b/g/n wireless network.


 **Note:** 5 GHz wireless networks are not supported.

Before you begin, ask your network administrator if your network has a Dynamic Host Configuration Protocol (DHCP) server. If it does not have a DHCP server, collect this information:

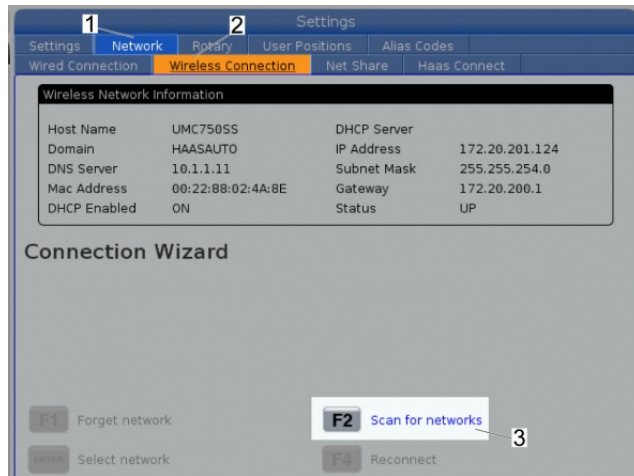
- The IP address that your machine will use on the network
- The subnet Mask address
- The Default Gateway address
- The DNS Server name

You also need this information:

- The SSID for your wireless network
- The password to connect to your secured wireless network

 **Note:** Make sure that SSID broadcasting is enabled on your wireless network. The Connection Wizard can not find networks with SSID broadcasting disabled.

## STEP 1



Push **[SETTING]**.

Select the **Network** tab [1].

Select the **Wireless Connection** tab [2].



Push **[F2]** [3] to show all of the available wireless networks.



**Note:** Make sure that SSID broadcasting is enabled on your wireless network. The Connection Wizard can not find wireless networks that have SSID broadcasting disabled.

The display shows the values of the settings, the **MAC Address**, **Status** and other important information.

Go to Step 2 for more information on these settings.

## STEP 2

### Wireless Network Status

	Value	Meaning
Status	*	The wireless connection is disabled.
Status	<i>UP</i>	The machine is connected to a wireless network.
Status	<i>DOWN</i>	The machine is not connected to a wireless network.
Status	<i>DORMANT</i>	The machine is waiting for external action. Typically it is waiting for association or authentication with the access point.

### Function Keys

Function Key	Action
<b>[F1] Forget Network</b>	Push <b>[F1]</b> to clear the wireless network. It will not automatically reconnect.
<b>[F2] Disconnect and refresh access points</b>	Push <b>[F2]</b> to disconnect from the wireless network and show the available wireless networks.
<b>[F4] Reconnect</b>	Push <b>[F4]</b> to connect to the wireless network again.

## STEP 3

The screenshot shows the 'Settings' menu with the 'Wireless Connection' tab selected. Under 'Wireless Network Information', various system details are listed. Below that, the 'Connection Wizard' is active, showing a list of available wireless networks. The network 'WirelessVoice' is highlighted, and a red box with the number '1' and an arrow points to it. At the bottom, function key actions are listed: F1 (Forget network), F2 (Scan for networks), ENTER (Select network), and F4 (Reconnect).

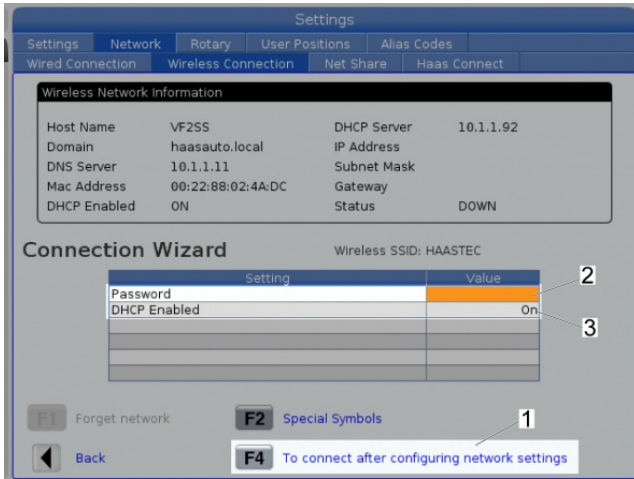
The Connection Wizard displays a list of available networks, with their signal strengths and security types. 64/128 WEP, WPA, WPA2, TKIP, and AES are supported.

Select the **Wireless SSID** for network [1] you want to connect to.



Push the **[RIGHT] CURSOR** arrow.

## STEP 4



Type the network password [2]. This is case-sensitive.



**Note:** Do not enter a password if the network does not require one.

Set **DHCP Enabled** to **On** [3].



**Note:** Set **DHCP Enabled** to **Off** to manually set up the network.



Push **[F4]** To connect after configuring network settings [1].

Wait until the **Status** changes from **DOWN** to **UP**.

Go to **Net Share** to configure the remote and local net share settings. Refer to [Next Generation Control - Net Share](#) for more information.