



Next Generation Control (NGC) - Backup Machine

Scan code to get the latest version of this document



Translation Available



Next Generation Control - Backup Machine - Introduction

Do this procedure to backup all of the machine files on your machine. Do this procedure on machines with the Next Generation Control.

To backup only the program files, do the [Next Generation Control - Backup Programs](#) procedure.

You must have a USB drive on the side of the control pendant or in the electrical cabinet to do this procedure.

Tools Required



USB memory device

Next Generation Control - Backup Machine

STEP 1

Set Setting 155, **Load Pocket Tables**, to **ON**.



Note: Make sure the memory lock key switch is in the unlocked position.



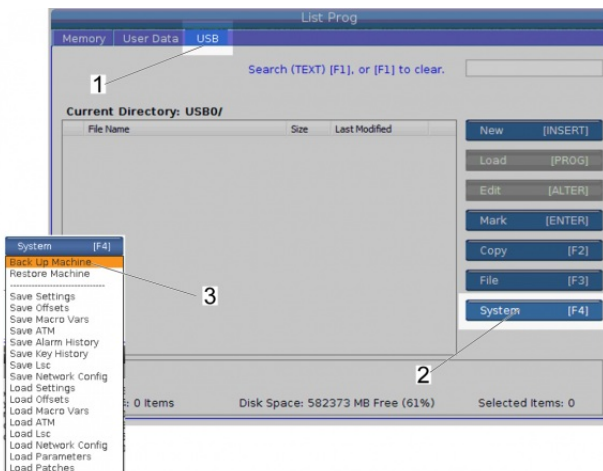
Push **[LIST PROGRAM]**.

Push the **[LEFT]** and **[RIGHT] CURSOR** arrows to select the **USB** tab [1].

Push **[F4], System** [2].

Push the **[UP]** and **[DOWN] CURSOR** arrows to select **Back Up Machine** [3].

Push **[ENTER]**.

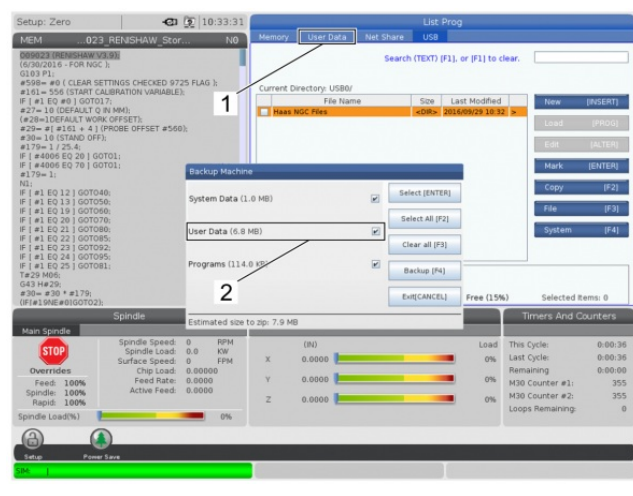


STEP 2

Know this important information about backup files:

- The next step puts the copies of the machine data files in the open directory on the USB memory device.
- The backup makes a .zip file. You can open this .zip file on the control or on a PC.
- The name of the .zip file that contains the backup data has this structure: "HaasBackup", then the date. For example, **HaasBackup(xx-xx-xxxx).zip**.
- You cannot make a backup file if the control is in **MEMORY** or **USER DATA** modes.

STEP 3



This screen lets you select the data files to make copies of.



Caution: If the machine has software version **100.15.000.1011**, **DO NOT** select **User Data [2]** when you make a backup. Go to the **User Data** tab [1]. Select the **User Data** files to backup. Push **[F2]** to copy the files to the USB memory device.



Push the **[UP]** and **[DOWN]** **CURSOR** arrows to move to a selection.

Push **[ENTER]** to select or deselect what you must backup.

Push **[F4]** to make the backup.

STEP 4

Know this information about the stored data:

- **System Data** makes copies of these data files:
 - settings
 - offsets
 - macro variables
 - advanced tool management (ATM)
 - alarm history
 - key history
 - linear screw compensation (LSC)
 - network configurations
- **User Data** makes copies of all the files in the User Data folder.
- **Programs** makes copies of all the files in the Memory folder.
- The approximate size of each selection shows on the right side of the display. The total **Estimated size** shows at the bottom.
- If a selection is too large for the USB memory device, it is grey.